



THE eQ-SERIES



110-450

ALL-ELECTRIC



MILACRON

THE eQ-SERIES

HIGH PRECISION ELECTRIC INJECTION MOULDING

INGENUITY, DEDICATION AND EXPERIENCE

eQ-SERIES gives you the flexibility to handle more applications. eQ-SERIES's movements are entirely controlled by servo drives. This not only results in maximized acceleration, but it ensures ultimate accuracy and exceptional reliability across all processes as well as highly precise motion, position and pressure control.

RELIABILITY AND REPEATABILITY FOR HIGH PRECISION ELECTRIC INJECTION MOULDING

- Ⓜ Large Tie Bar spacing and highly sensitive mould safety
- Ⓜ Moving platen on L M guideway
- Ⓜ Simplified programming of freely configurable cores
- Ⓜ Very low maintenance costs – proven design and product optimisation results in maximum machine uptime, fewer components and less wear

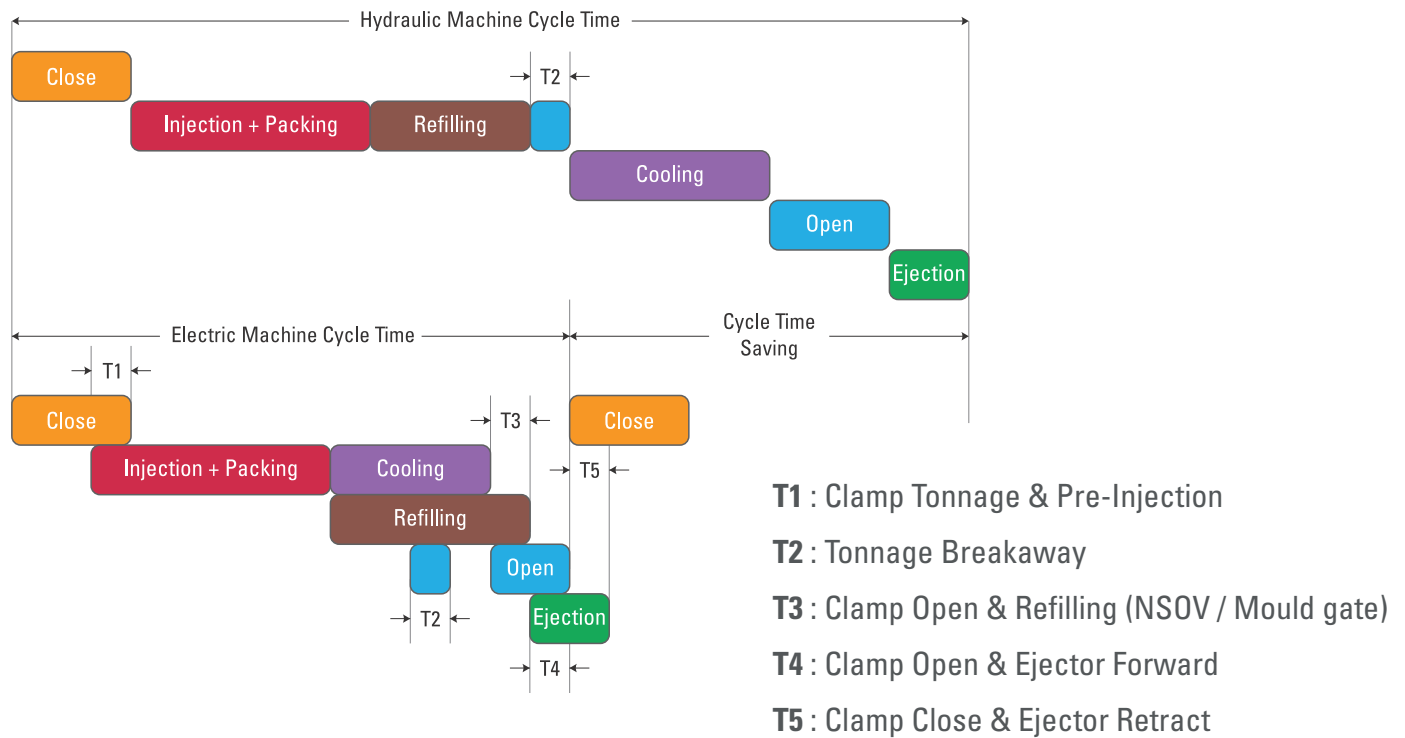


SERVO TECHNOLOGY MAKES THE DIFFERENCE

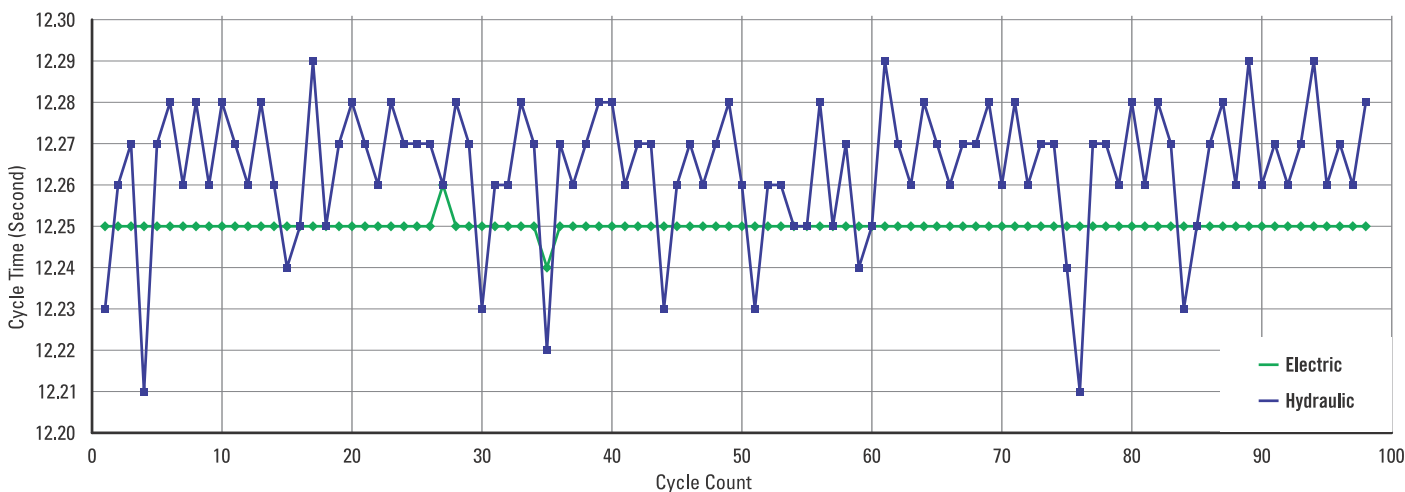
The latest generation servo drives are designed for handling fast acceleration and short time peak current. The feeding of energy back to the power supply optimizes energy consumption.

CYCLE TIME SAVINGS

Optimize your cycle time using simple pre-injection function. Typical cycle reduction of 0.3 – 0.7 seconds.



UNMATCHED REPRODUCIBILITY



THE eQ-SERIES

IMPROVED CLAMP DESIGN

- Fast and Smooth Mould movements through Improved Toggle kinematics, Linear Guides and Advanced Motion Control
- Long Tie Bar Spacing, Mould Opening Stroke & Ejector Stroke



4

STRONG AND STABLE

- Rigid Base design with reduced deflection
- High Performance and Long-life Anti-Vibration mounts

ADVANCED MOULD PROTECTION

- Advanced Mould Safety
- Advanced Mould Ejector Pin Safety
- Ejector Motor with Mechanical Brake to Hold Ejector Spring in Position

PROVIDING THE HIGHEST PERFORMANCE,
PRECISION AND FLEXIBILITY.



HIGH PERFORMANCE CONTROL

STRONG & STABLE INJECTION UNIT

- Rigid mechanical structure and Linear Guides for Smooth and Precise Injection velocity
- Loadcell with advanced Strain technology for precise Injection & Back Pressure control
- Hydraulic Nozzle Holding Force

ENERGY EFFICIENT

- Low Power Consumption through Regenerative Servo drive technology
- Advanced Motion technology for Fast and Precise Performance

IMPROVED ELECTRIC DRIVE AND SAFETY FEATURES

- Surge Suppressors provided as Standard
- Inbuilt Line Filters & Inductors to reduce harmonics

THE eQ-SERIES

The industry standard setting technology found in the eQ-SERIES all-electric injection moulding machine is a direct result of years of dedication and experience.

eQ-SERIES is the next generation of injection moulding machine, with higher precision and reliable moulding capabilities than ever before. Engineered for greater rigidity, eQ-SERIES's proven performance makes it the perfect solution for cleanrooms and other moulding environments that demand precise process control, high speed injection, and consistent repeatability.

Injection Unit Specifications

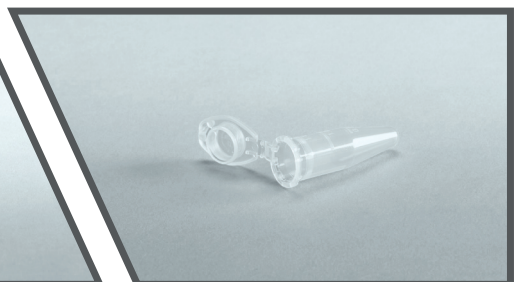
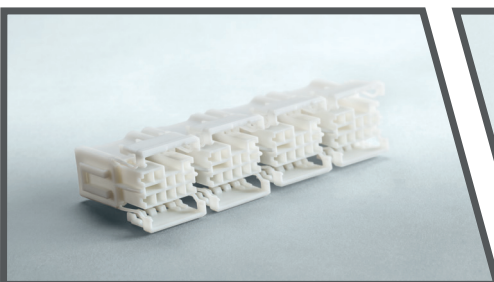
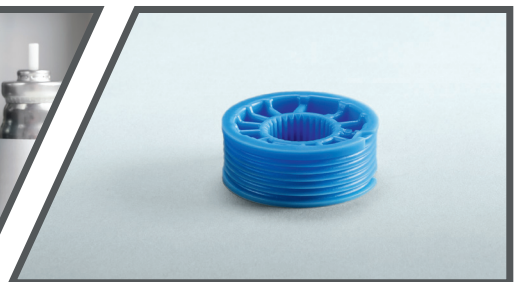
IU	120	300	450	630	970	1540	2290	3470
eQ-SERIES 110								
eQ-SERIES 150								
eQ-SERIES 180								
eQ-SERIES 230								
eQ-SERIES 280								
eQ-SERIES 350								
eQ-SERIES 450								

Clamp Specifications

MODEL	TONNAGE	PLATEN SIZE (H X V)	TIE BAR SPACING (H X V)	MAX DAYLIGHT	MIN/MAX MOULD THICKNESS
	tons	mm	mm	mm	mm
eQ-SERIES 110	110	690 x 645	480 x 435	900	150 / 520
eQ-SERIES 150	150	780 x 740	550 x 510	1060	200 / 600
eQ-SERIES 180	180	810 x 770	575 x 525	1100	200 / 600
eQ-SERIES 230	230	920 x 820	660 x 560	1260	200 / 710
eQ-SERIES 280	280	990 x 940	710 x 660	1400	250 / 750
eQ-SERIES 350	350	1120 x 1035	810 x 725	1520	300 / 800
eQ-SERIES 450	450	1245 x 1200	875 x 830	1670	350 / 820

APPLICATIONS

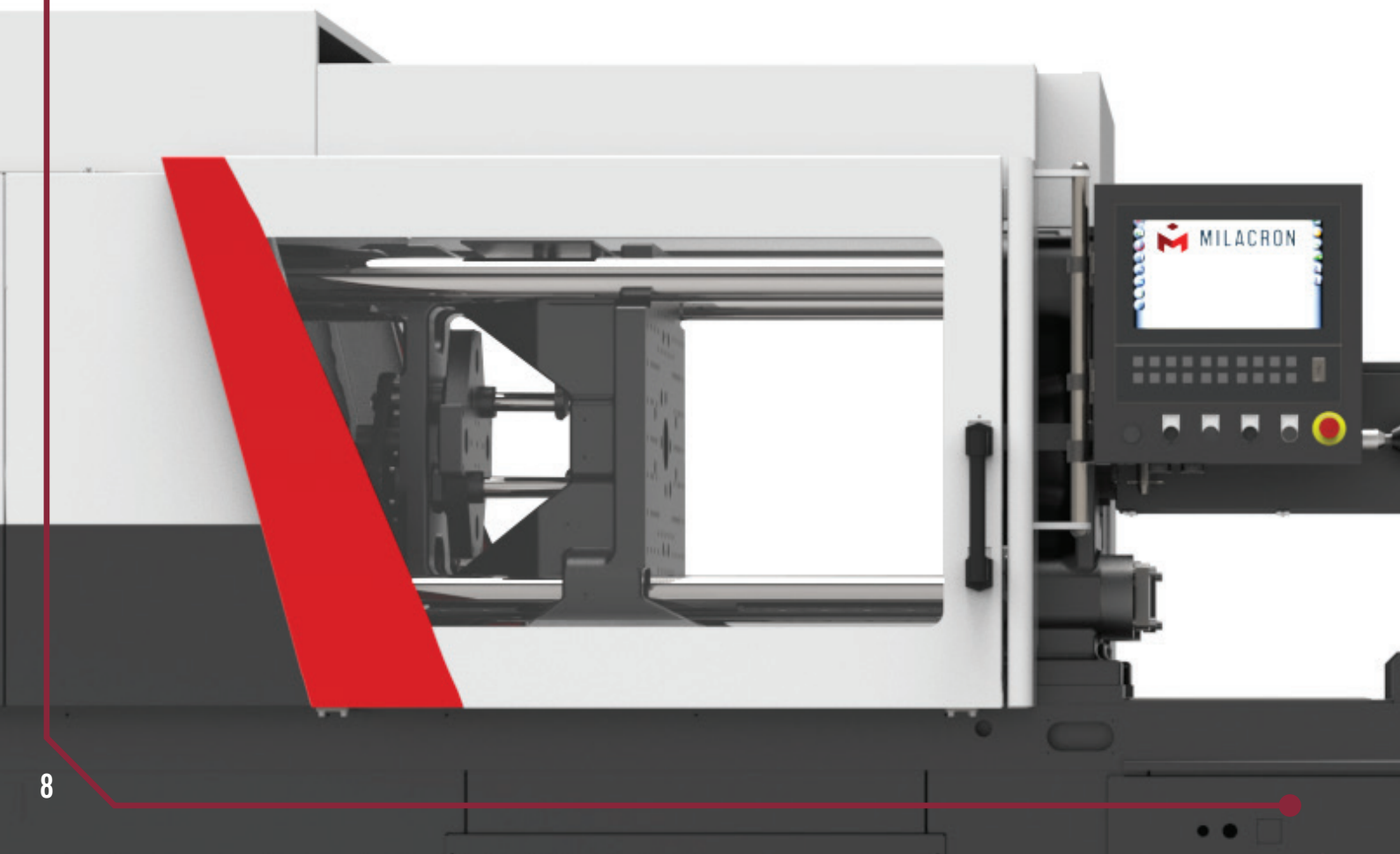
- CAPS & CLOSURES
- PACKAGING
- MEDICAL
- AUTOMOTIVE



CLAMPING UNIT

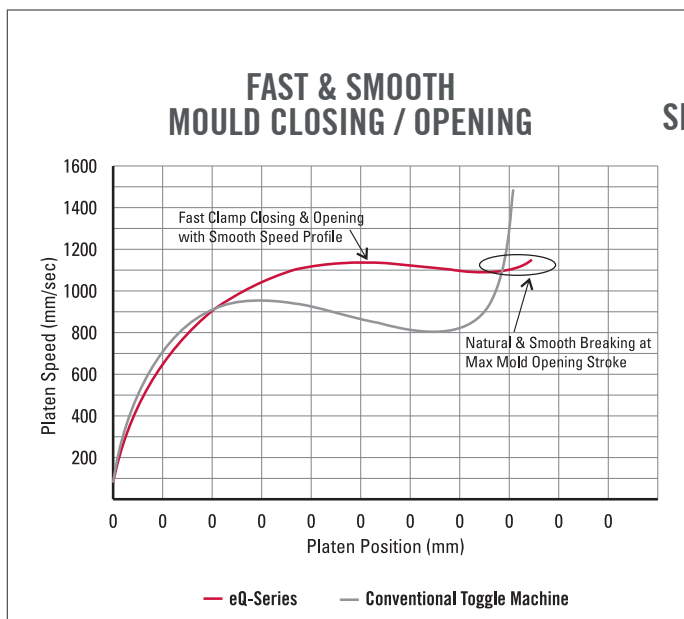
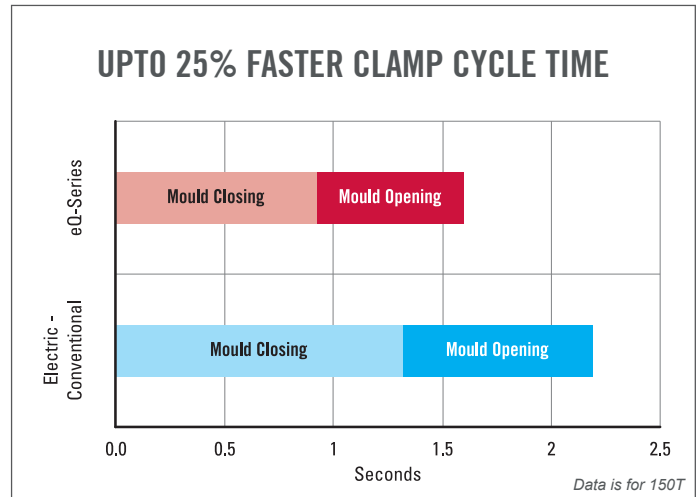
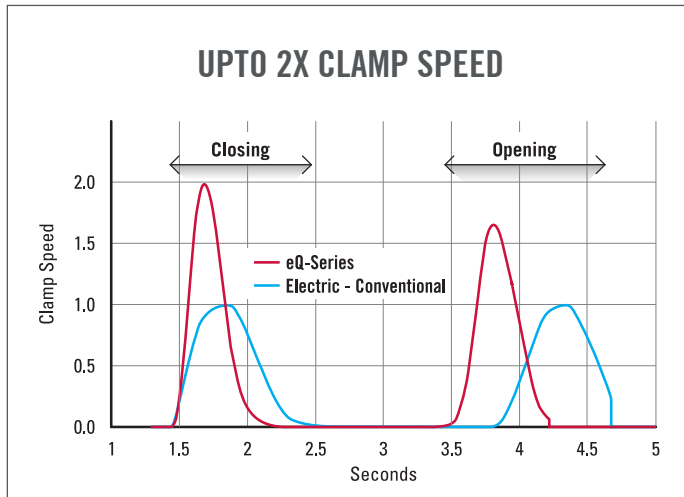
The all new clamp system on the eQ-series has been mounted on the LM guideways which provide precise movement with no frictional losses. The clamp system has higher mold weight carrying capacity, enhanced parallelism and squareness.

- Wide platen and tie bar spacing for greater flexibility
- Clamp designed for uniform force distribution minimising platen deflection and reducing mould flash tendency
- Automatic Die Height adjustment for accurate tonnage setting
- Standard Core software provides flexibility to customer in configuring special sequences; Various options of portable hydraulic power units available.
- Water systems available to increase cooling efficiency and higher productivity
- Mould Guard & Eject Guard reduces risk of damaging delicate and expensive moulds. Tonnage drop feature helps reduce cycle time by releasing tonnage parallel to cooling.
- Anti-fretting Mould clamping design*
- Improved toggle clamp for increasing productivity with reduced vibrations*



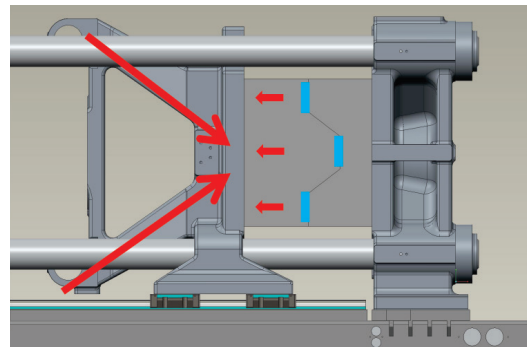
Smooth & Fast movement of Clamp

Better performance than conventional Electric Injection Moulding machines.



SPEED

CLAMP UNIT ON LM GUIDEWAYS



The moving platen design is improved for centrally applied force on the mold thereby ensuring uniform load distribution across the mould face and reduces platen deformation at the centre.

INJECTION UNIT

High performance injection motors

- Servo motors / drives optimised to deliver optimum performance with power.
- Reduced melt stress (70%)

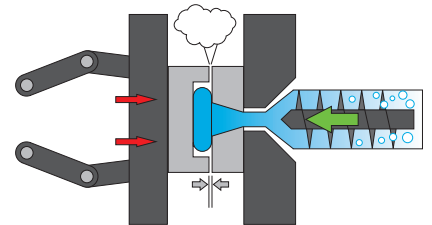
High performance injection unit

- Fast & accurate injection pressure control with 500 sampling every second
- Selectable dynamics of Injection supports special applications & improves component life
- Hydraulic sled unit* for higher nozzle contact force requirement in packaging application
- 25% Increased Injection Speed with reduced pressure possible

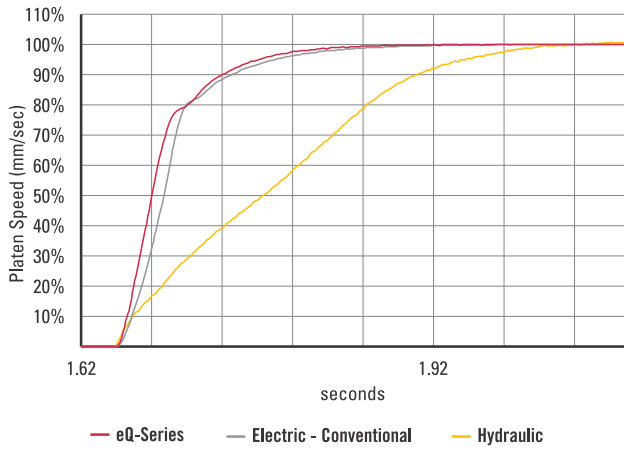
Pre-Injection

eQ-SERIES's Pre-Injection feature enables the start of injection based on partial tonnage (selectable) built up.

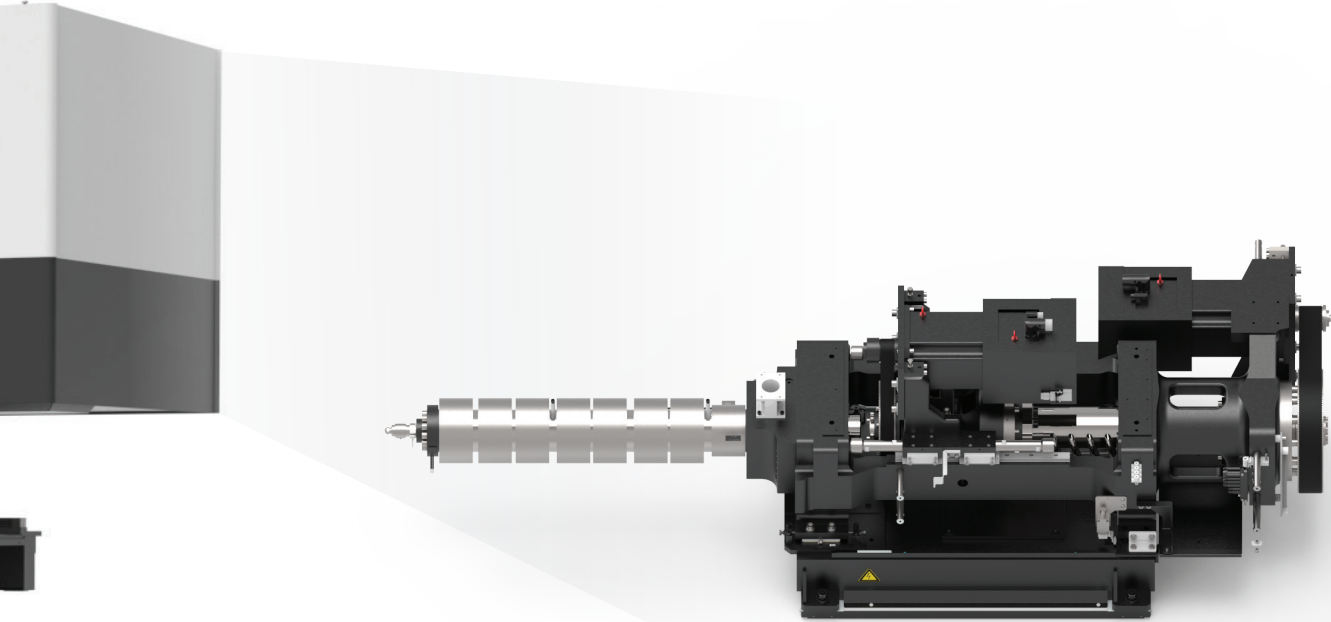
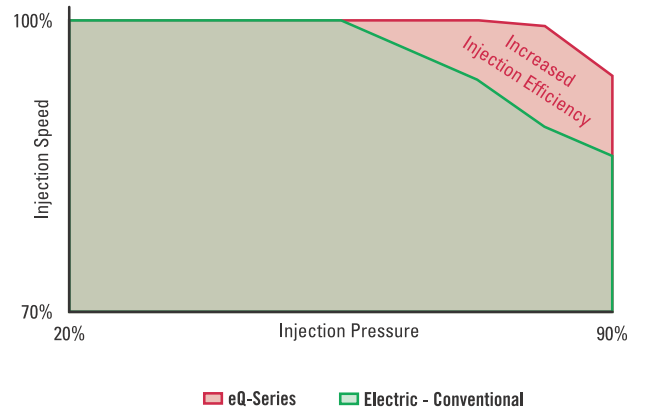
- Enhanced mould venting is controlled by injection timing and also available based on pressure or clamp tonnage feedback
- Instant cycle time reduction by overlapping of injection and tonnage build and/or clamp force decompression during cooling stage



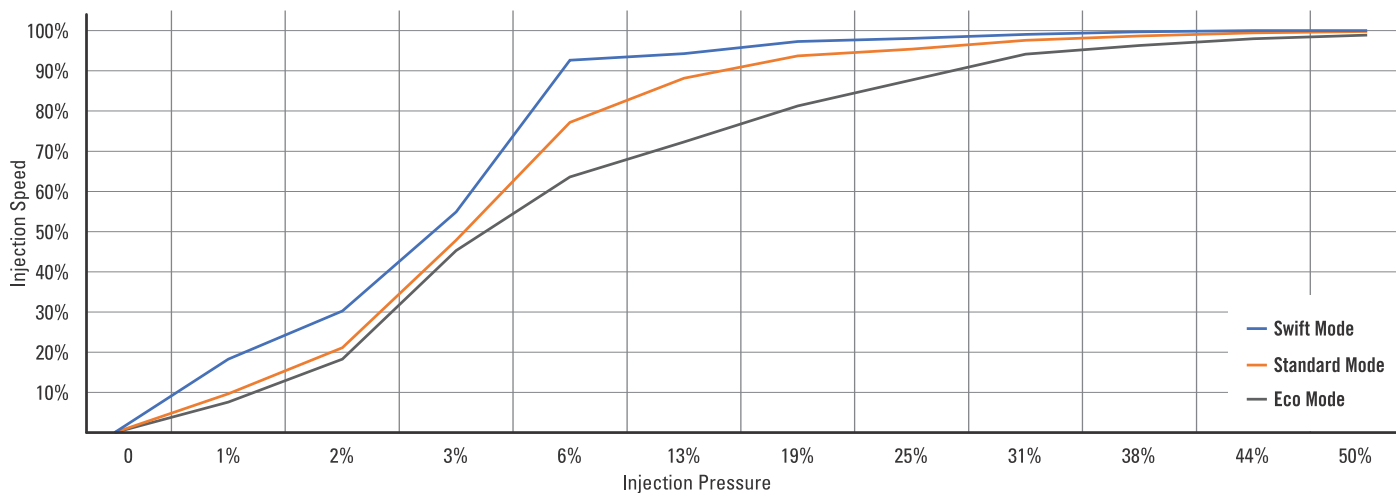
Higher Injection Acceleration



Upto 90% Injection Efficiency



FLEXIBLE MACHINE



PROTECT YOUR VALUABLE MOULDS

The Mould is one of the most critical parts of the injection molding process. The all new eQ-SERIES machines take care of your mold with Mould Safety as a standard feature. It's a closed loop control process which senses the presence of left over article from the last process cycle or any foreign article in between the core & the cavity. It's a continuous monitoring system. The control records & analyses the data after every process cycle.

MAXIMUM MOULD AND EJECTOR PROTECTION

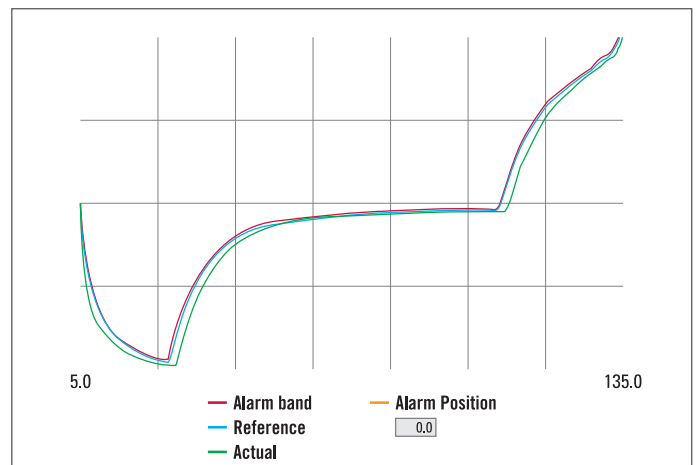
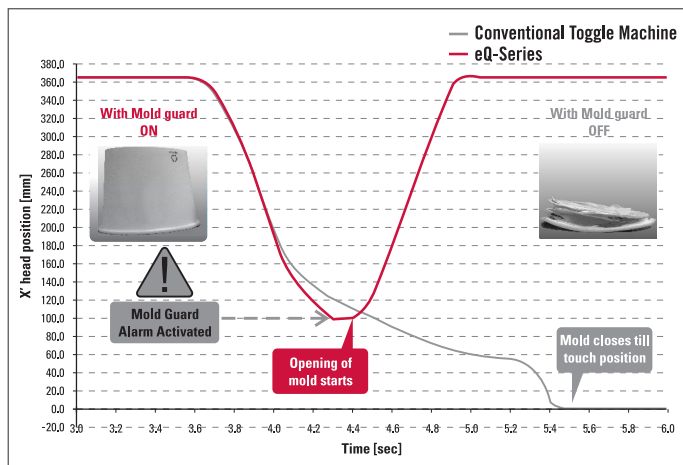
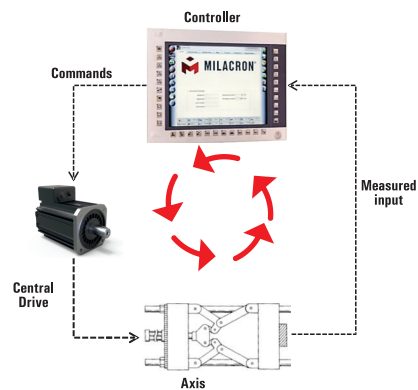
eQ-SERIES Mould and Ejector Protection provides the best mould protection on the market.

RELIABLE PROTECTION AT NO COST TO SPEED

This kind of high-speed responsiveness is provided by its electric drives and superior motion control technology. Clamp tolerances are also programmable across the entire mould movement.

YOUR BENEFITS WITH EQ-SERIES MOULD AND EJECTOR PROTECTION:

- Protects your mould from damage
- Minimal repair costs
- Reduces costly downtime
- Very easy set-up – just turn on and set sensitivity level

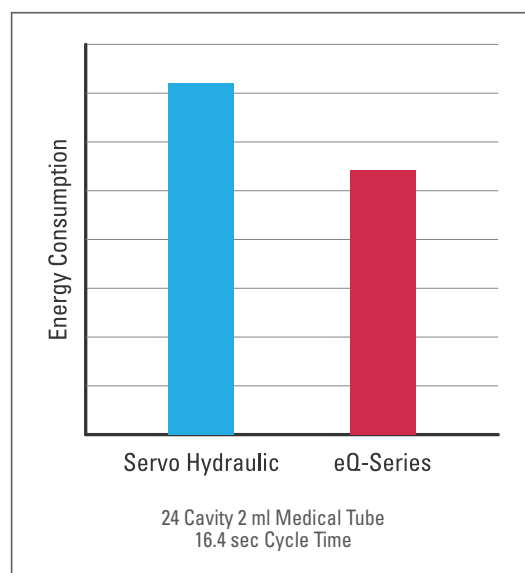
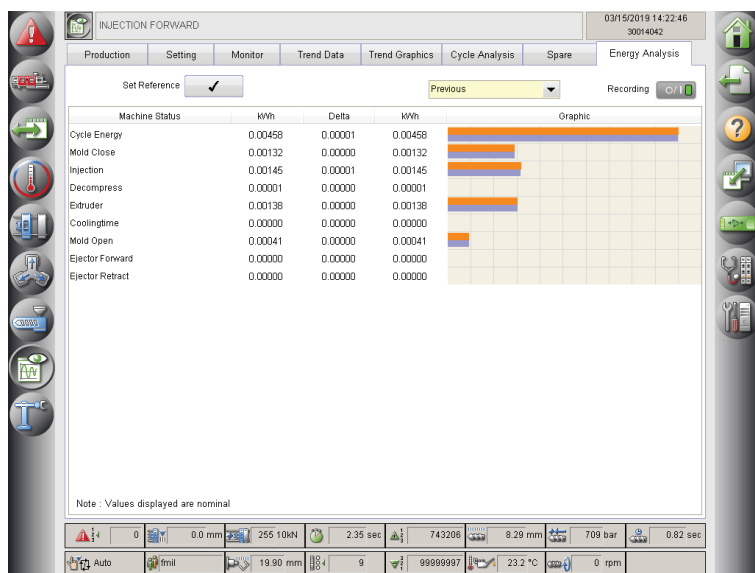


LOW ENERGY CONSUMPTION

Milacron's superior servo technology and intelligent energy recovery system reduces eQ-SERIES's energy consumption by 50-70% compared to hydraulic machines. eQ-SERIES's regenerative power recovery system stores energy during motor braking and makes it available for other motions.

POWER CONSUMPTION BREAKTHROUGHS

Power consumption of each function is recorded. The excess energy fed back from the motors is also monitored. The insulated heater bands prevent loss of energy in form of heat.



Energy Saving up to 50-70%
Compared to Hydraulic Machines

SMALLER FOOTPRINT. INTEGRATED POWERPACK*

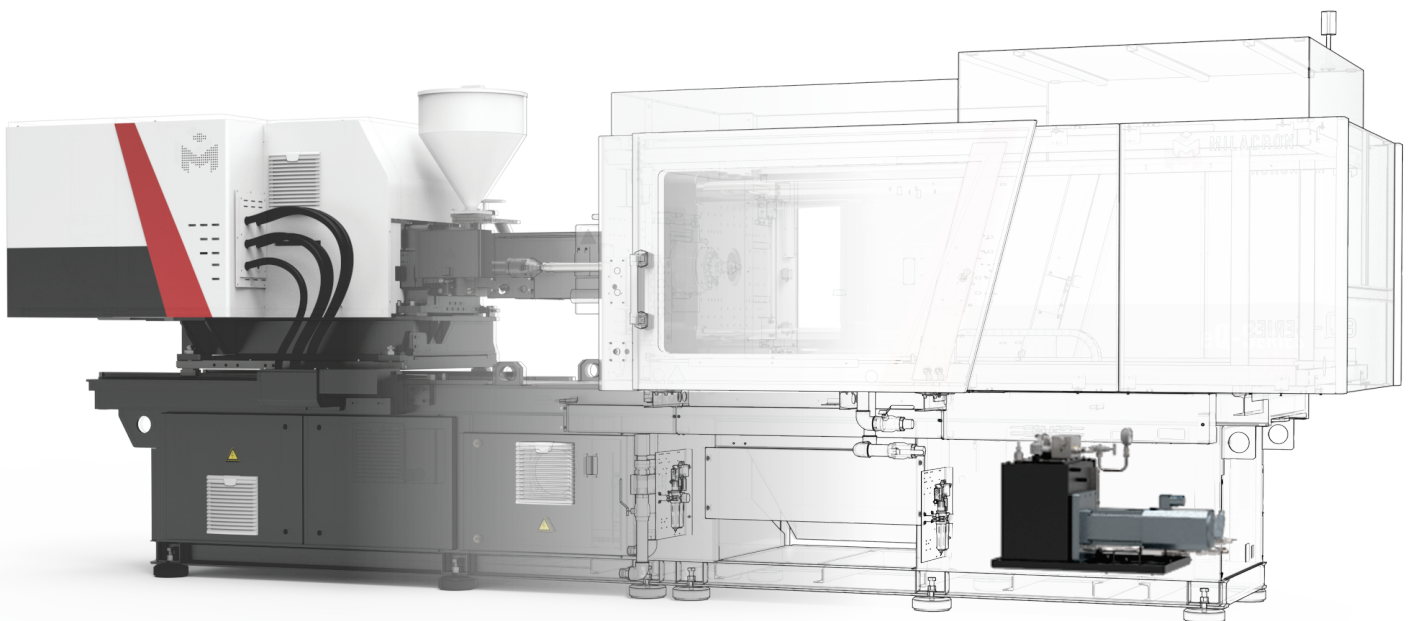
The eQ-SERIES comes equipped with a powerpack inside the base of the machine. This reduces the overall footprint of the machine and the need to invest in an additional external powerpack.

Benefits

- Space Saving
- Pre-configured / Integrated with machine capability
- Leakfree / Low noise design

Application

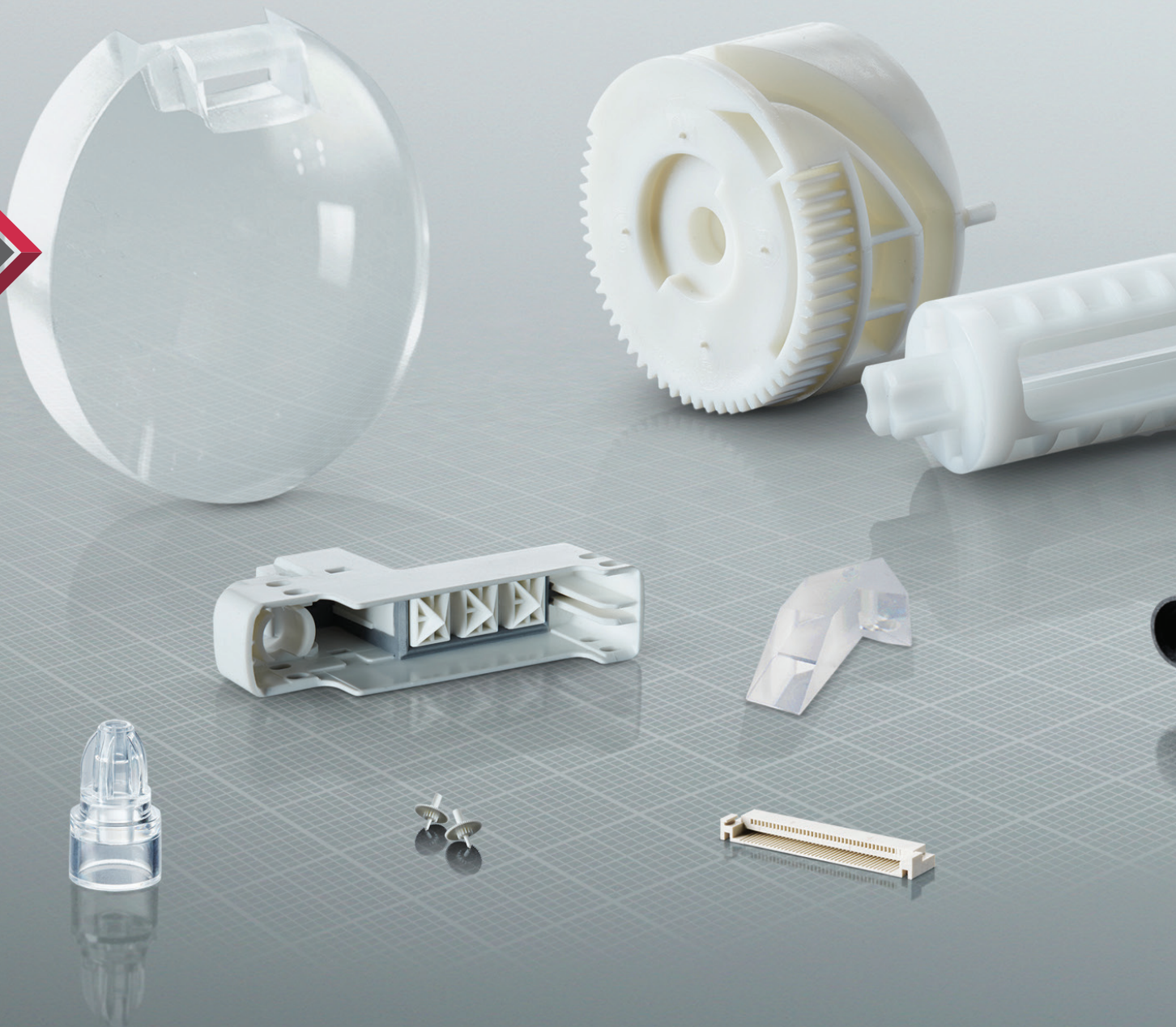
- Core pull
- High ejector force
- High nozzle contact force



VERSATILE MACHINERY FOR ALL APPLICATIONS

With models capable of exerting clamping forces from 110 to 450 tons, eQ-SERIES is ideally suited to a diverse range of straightforward as well as sophisticated injection moulding tasks. Offering huge versatility, eQ-SERIES's unique strength is the freedom it provides you to produce almost anything using just one machine – whether that be delicate items such as thick wall camera lenses, micro medical or thin wall packaging products, that require high levels of dynamic force to produce. Thanks to its high level of specification, even standard eQ-SERIES machines can be used to produce specialised items.

16

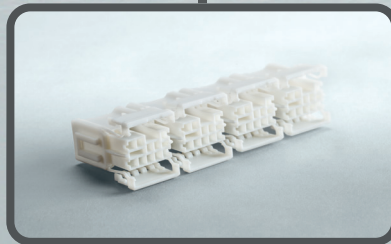




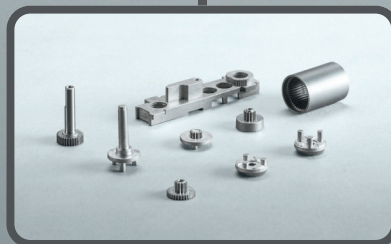
THIN WALL MOULDING



MULTI COMPONENT MOULDING



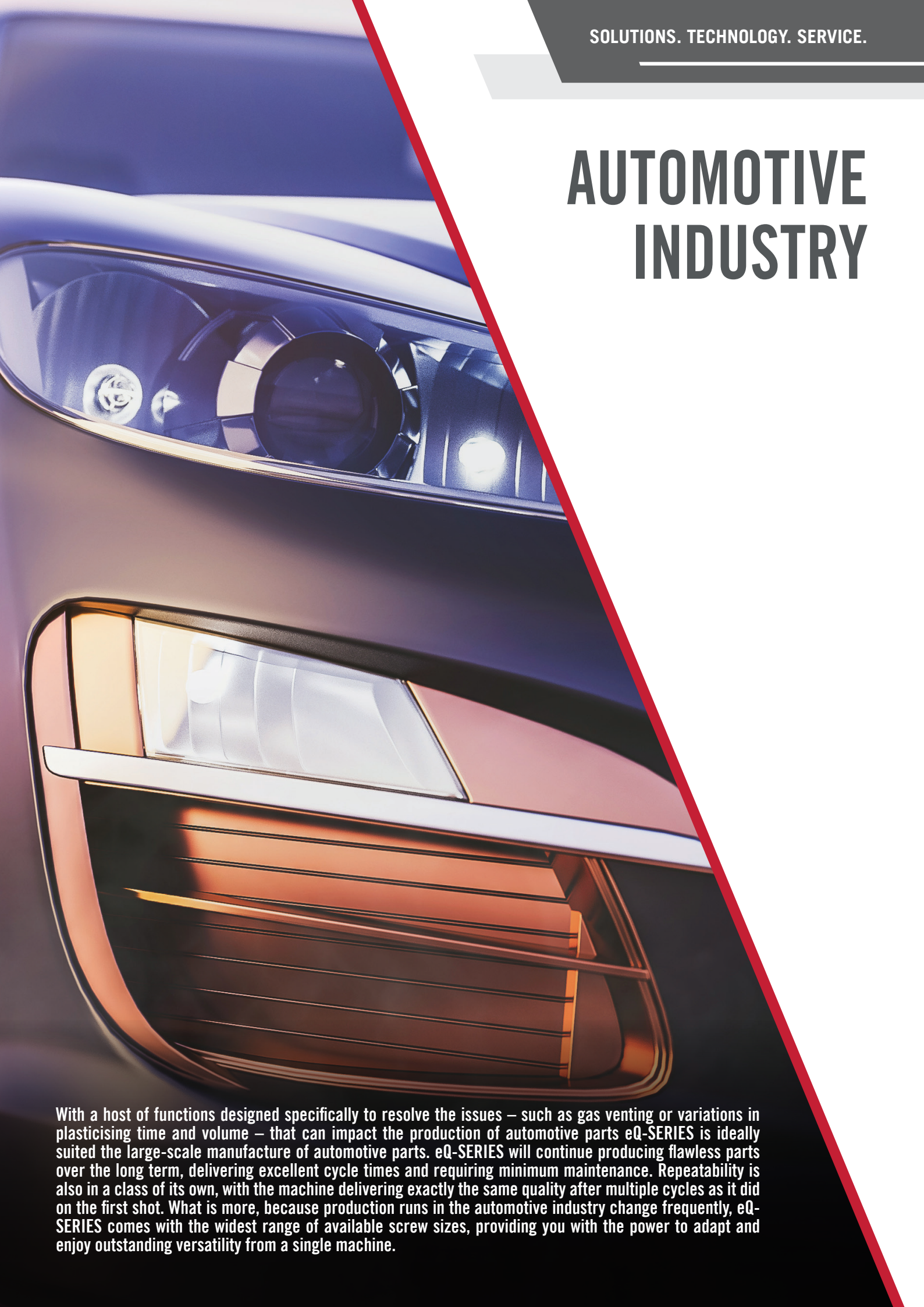
PRECISE MOULDING



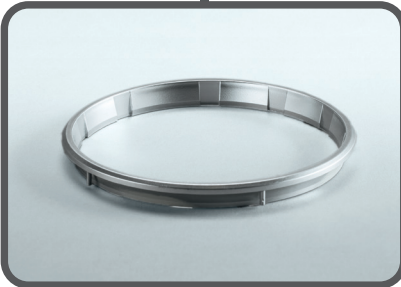
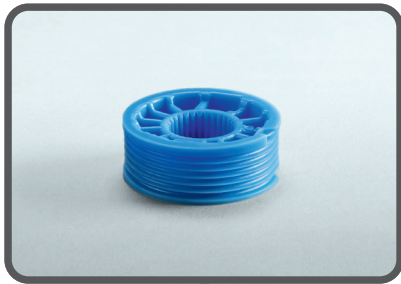
PRECISE MOULDING



AUTOMOTIVE INDUSTRY

A close-up photograph of a car's front end, focusing on the headlight and grille. The headlight is illuminated, showing its internal components. The grille is a prominent feature, with horizontal slats. The car's body is a dark color, possibly black or dark blue. A red diagonal line runs across the image, separating the car from the white background on the right.

With a host of functions designed specifically to resolve the issues – such as gas venting or variations in plasticising time and volume – that can impact the production of automotive parts eQ-SERIES is ideally suited the large-scale manufacture of automotive parts. eQ-SERIES will continue producing flawless parts over the long term, delivering excellent cycle times and requiring minimum maintenance. Repeatability is also in a class of its own, with the machine delivering exactly the same quality after multiple cycles as it did on the first shot. What is more, because production runs in the automotive industry change frequently, eQ-SERIES comes with the widest range of available screw sizes, providing you with the power to adapt and enjoy outstanding versatility from a single machine.



control.



Ultimate flexibility

The eQ-SERIES allows moulders the maximum amount of application flexibility with its increased daylight option and easily interchangeable barrels and screws. The eQ-SERIES also provides exceptional repeatability when moving moulds from machine to machine even when changing models or tonnages.

Capability to integrate additional axes

By using servo motors and drives, the eQ-SERIES can fully integrate multiple additional axes all through one control. The eQ-SERIES has the capability to easily integrate and maintain precise control and movement repeatability.

eQ-SERIES can be fully integrated with other axes (like cores, both hydraulic and electric) allowing all functions to be operated from the one machine.

Optimal networking using Euromap 77 & M-Powered

M-Powered integrates all Injection Moulding Machines from Milacron to a single platform for performance management.

Euromap 77 are quality information management systems for globalised and larger scale of moulding plants.

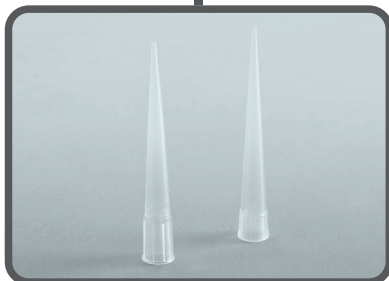
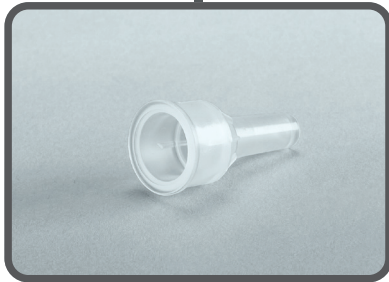
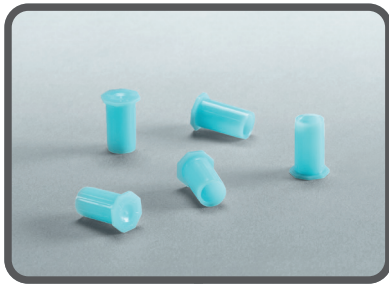
- Central production monitoring
- Process data capture & extraction
- Machine status visualisation
- Customised reports

SOLUTIONS. TECHNOLOGY. SERVICE.

MEDICAL INDUSTRY



Quality, reliability and repeatability are critical to the production of medical products. eQ-SERIES has a highly sensitive pre-injection process to resolve any issue related to processing of medical grade plastics.



Integrated hot runner control

This allows the machine operator to control the processing parameters from the machine control thereby providing ease of operation.

Historical traceability

Given the nature of medical products, acquiring and processing data is critical. To make this easy eQ-SERIES is available with smart features – such as M-Powered & Euromap 77 OPC designed to capture and store data on a central server and provide complete part traceability.

Enhanced processing information

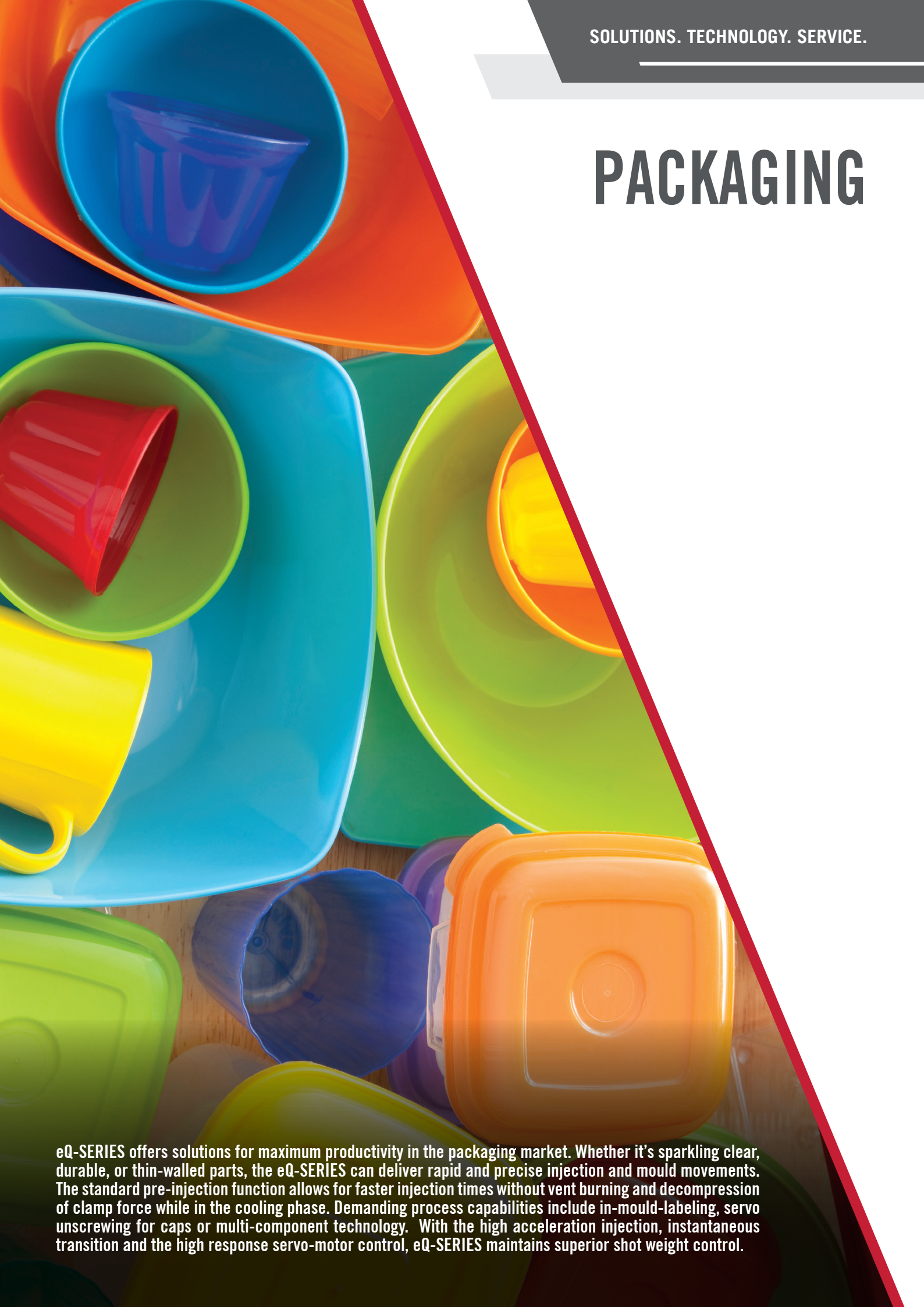
Just what you need for setting up, validation and on-going monitoring.

- Reference data curve storage
- Quality control outputs
- Multiple curve display
- Optional multiple cavity pressure interface with external signal transfer
- Process data download during operation to External USB device / Network location.
- Available 0-10Vdc for multiple parameters
- Custom Signal capability to interface with automation

Dimensional Accuracy

The product output from the eQ-SERIES is always consistent in terms of weight and dimensions, two things that matter the most in the medical industry.

PACKAGING



eQ-SERIES offers solutions for maximum productivity in the packaging market. Whether it's sparkling clear, durable, or thin-walled parts, the eQ-SERIES can deliver rapid and precise injection and mould movements. The standard pre-injection function allows for faster injection times without vent burning and decompression of clamp force while in the cooling phase. Demanding process capabilities include in-mould-labeling, servo unscrewing for caps or multi-component technology. With the high acceleration injection, instantaneous transition and the high response servo-motor control, eQ-SERIES maintains superior shot weight control.



Heavy-duty injection units for faster cycle times

The production of components for the packaging industry often demand machines that are capable to achieve cycle times less than 5 sec. to produce closures and food containers. eQ-SERIES has a proven injection unit to achieve this.



Increase the quality of your optical parts

For packaging parts, control of the mould temperature is critical for surface quality. Integrating this functionality into the control saves time and helps prevent errors. Consistent moulding is enabled by the clamp and ejector compression function.



Screw variation and flexibility

Milacron offers a variety of different screw and barrel materials specifically designed to fit your application.



Wide Tie Bar Spacing

The eQ-SERIES is able to accommodate wider moulds for various packaging applications. This is due to the industry's best Tie-Bar spacing provided on the clamp. The clamp also has higher mould weight carrying capacity than the older generation machines.



STANDARD FEATURES

CLAMP	
5 Operator adjustable closing & opening speeds	●
Tonnage Display on screen	●
All parameters set in Physical / Absolute values	●
Mould safety speed and force adjustable	●
Position based accel/decel	●
Clamp position read out	●
Open Loop Auto die height adjust (toggle)	●
Moving Platen on Linear Guides and Grease Free Tie Bars	●
Clamp try again	●
Clamp Force Decompression during Cooling	●
Grease Collection Tray below Toggle Area and Moving Platen	●
Euromap Mould Mounting Holes pattern	●
Euromap 18 Robot mounting on Stationary Platen	●
Extended Daylight	○
Extra Shoe for Stack Mould on LM guide	○
T-Slot Platen	○
T-Slot with tapped Holes	○
JIS Mould Mounting	○
JIS ejector	○
Quick change ejector coupling (Centre Ejector)	○
Pneumatic Jam Bar	○
Robot Mounting as per SPI	○
De-Humidification covers	○

EXTRUDER	
Digital set extruder speed (RPM)	●
Digital read out actual RPM	●
Closed Loop speed (RPM) control	●
5 Extruder RPM steps - refilling cycle	●
Closed Loop Back Pressure control	●
5 Back pressure steps	●

EJECTOR	
Ejector position read out	●
Closed Loop Speed control	●
Intermediate retract setpoint	●
Adjustable forward/retract speed	●
2 Forward speeds (Separate speeds for 2nd pulse & 3-9 pulses i.e. 2 more speeds)	●
2 Retract speeds	●
9 Ejector pulses	●
Parallel Ejection (Eject on Fly)	●
Ejector Stay Forward with Gate Open via Ejector Motor with Brake	●
Eject Retract verification by Limit Switch	●
SPI Knock out Bar for Multipoint Ejection	●
Center Ejector Rod With Side Ejector Pins (4 +1) upto 450T	●
Hydraulic Ejector for High Ejector Force	○

INJECTION	
Closed Loop Velocity	●
20 Configurable velocity steps (10 - Fill & 10- Pack/Hold)	●
Closed Loop Pressure control	●
10 - Fill pressure steps	●
10 Configurable packing/hold pressure steps	●
Transfer Ti = Time; Po = Position; Pr. = Pressure	●
Delayed start of plasticizing function	●
Thermocouple breakage monitoring	●
All parameters set in Physical / Absolute values	●
Injection Position readout	●
Injection pressure on screen by Loadcell	●
Cold Start Protection	●
Injection decompression before/after/both	●
Insulated Ceramic Heaters for energy saving	●
Injection on Linear Guides for fast speed and smooth movement	●
Nitrided GPPS Screw, Barrel and Nonreturn valve	●
Electric Injection unit Movement and Nozzle Holding Force	●
Sliding Hopper with magnet	●
Pneumatic Shut Off Nozzle	○
Wear Resistant (Bi-Metalic) Barrel	○
Wear Resistant Feedscrew	○
Special TSV	○
High Temperature Heaters	○
Extended nozzle tip & Heaters	○
High Speed Injection	○
Longer Holding Time	○
Electric Nozzle Contact Force	○

TIMERS	
Overall cycle timer	●
Injection delay timer	●
Injection timer	●
Injection pack/hold	●
Cool timer	●
Extruder delay timer	●
Extruder Overrun timer	●
Sled retract delay timer	●
Sprue break with timer	●
Clamp open dwell timer	●
Ejector forward & retract delay timer	●
Decompression Before & After Delay Timer	●
Timer precision - 0.01 Sec	●
Weekday Timer	●

TEMPERATURE CONTROL	
PID control nozzle	●
PID control all barrel zones	●
High/ low temperature alarms	●
Feed Throat Temperature Control	●
Auto Heat Start Programme	●
Heater Failure Detection & Monitoring on screen	●

● - Standard Feature ○ - Optional Feature

* Features not available on all models.

STANDARD FEATURES

CONTROL & SOFTWARE	
15.6" FHD Multi-Touch Capacitive Display (MOSAIC G3 Control)	●
20 function keys with LEDs (arranged around the Touch Screen)	●
Actual Injection Speed & Pressure Graph Display	●
30 Parameter monitoring for last 3000 cycles	●
500 Mould data storage	●
High / Low Limit Display for Each Adjustable Parameter	●
I/O diagnosis - Analog & Digital	●
Manual in PDF format for help	●
Overview Menu for Easy access of all axis parameters	●
Choice of Multiple Languages	●
Unit Selection (Metric or English)	●
Data Protection with four level of access	●
Graphical Representation of last 48 Hours Production	●
Daily Production Data of last 1 Year	●
Graphical Representation of Cycle Analysis	●
Energy Consumption analysis for each axis (Energy display in kWh for every cycle on MMI)	●
Automatic Reporting of Process Data, Alarms, Change log (USB or Network location)	●
Change Log Menu: logs last 3000 Set Points Changes with Time/Date & User	●
3000 Alarms History with Date & Time Log	●
Process Mode: Functions with its Co-functions on a Single Key Press	●
Note Pad	●
Freely Programmable Smart Outputs & Inputs (total 3 inputs and outputs)	●
Freely Configurable Cores, Ejector & Air	●
4 User Configurable actual parameters for ease of monitoring for operators	●
Soft Keys for selection of Cores, Air & Mold Gates to operate in Set/Manual Mode	●
Favorite Page - Select 4 frequently used pages & operate from single page	●
Graphical adjustment of Clamp & Extruder Speeds & Pressure	●
Graphical display of Actual Zone Temperature of last 30 mins.	●
Detailed Cause & Remedy of Alarm helps easy understanding and resolution of error	●
Filtering of Alarm - Helps in quick analysis of specific alarm	●
Filtering & sort of Changelog - Helps in quick review / analysis of parameter changes	●
Configurable FlyOut area for viewing frequently used Monitoring Pages	●
No Page more than two clicks away	●
Auto shut down	●
Visual & Audible Alarm	●
Set point and actual values shown as absolute values	●
Plausibility check on values entered	●
Data saving in USB-Mould Data, Change log, Trend Data, Log book, Alarm History, Screen Shot	●
Shift wise Production Counter	●
Servo Motor / Drive diagnostic screen	●
Semi Auto Purge	●
Cold slug removal by extruder/ Injection	●
Intrusion Moulding	●
Insert Moulding	●
Freely Programmable Core pull Sequence	●
Sprue break with Limit Switch	●
2 free editing cores are controlled by the robot / Std EM 67	●
Pre-Injection (Injection along with Clamp force build up)	●
Parallel operation for mould movement, ejector and plasticizing	●

CONTROL & SOFTWARE	
Mould Guard	●
Ejector Guard	●
Injection Acceleration Control Auto Modes	●
Automatic log off	●
Shift based Production Counter	●
Logbook Reading of Controller on screen	●
Robot Interface (SPI & Euromap -12 & -67)	○
Eject Retract verification by Limit Switch	○
Good / Defective Part Signal	○
Gas Assist injection Interface	○

ELECTRICS	
Electrics - 400V, 50Hz, 3-Phase	●
Servo Motor & Regenerative Drive for Clamp, Ejector, Injection and Extruder	●
Semi Auto Push Button	●
Hour Meter on electrical panel	●
Power on Push button present on control cabinet left door to reset control supply after machine power supply failure or clearance of fault in voltage monitor relay.	●
UV/OV monitoring Relay-Voltage monitor relay	●
Surge suppressor device	●
Electrical unscrewing	○
Extra Power Supply	○
Neutral Free Electric Panel	○
Air Conditioning for Electrical Panel	○

HYDRAULIC, AIR & WATER	
Hydraulic Core	○
Hydraulic MGO	○
Pneumatic MGO	○
Hydraulic Unscrewing	○
Air Ejection	○
Manual Air eject (Up to 8 stage)	○
Water Manifold 4/5/7 Stack	○
Water Battery 4/5/7 Stack	○
Water saver valve for mould/pulse cooling	○

ADDITIONAL FEATURES	
Centralised Automatic Lubrication	●
High Performance Levelling pads	●
CE Safeties	●

● - Standard Feature ○ - Optional Feature

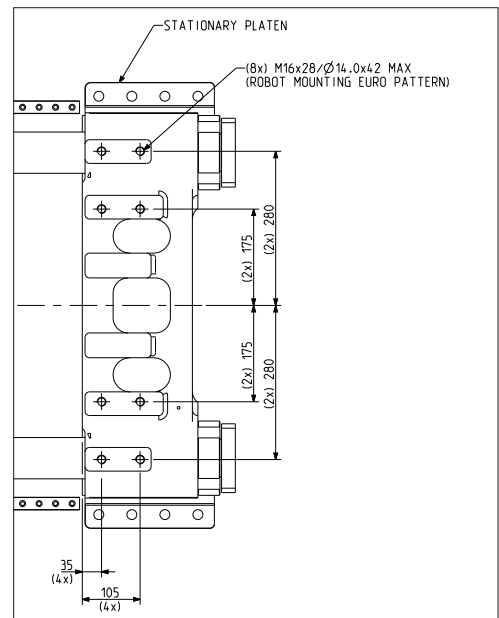
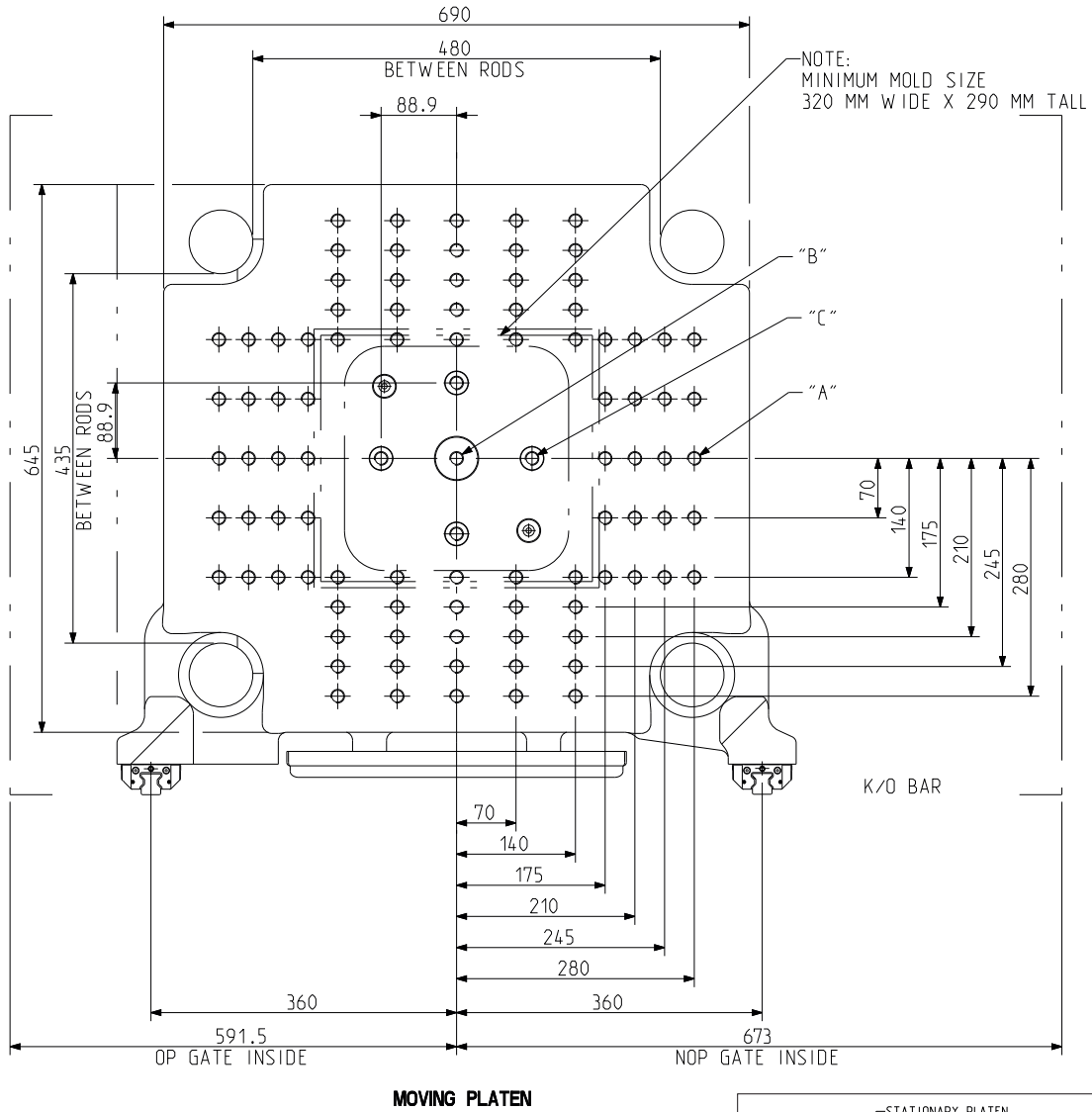
* Features not available on all models.

THE eQ-SERIES

TONNAGE: 110

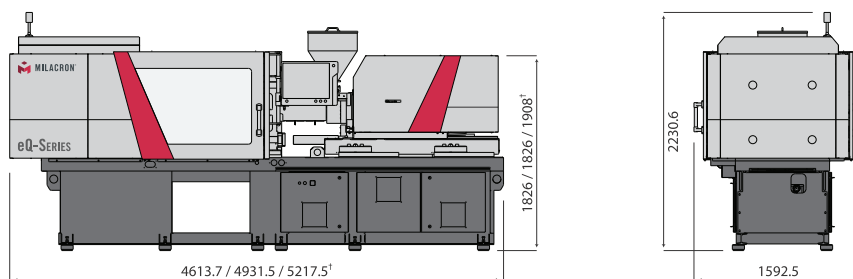
Injection Unit 120, 300, 450

TECHNICAL SPECIFICATIONS



ALL DIMENSIONS ARE IN MM

- A M16X32 (90) PLACES ON BOTH PLATEN
- B MOVING PLATEN: Ø50(+0.025/-0.0) THRU BORE, K/O BAR CENTRE HOLE M16 THRU
STATIONARY PLATEN: Ø100(+0.035/-0.0) WITH LOCATING RING, Ø125(+0.04/-0.0) x 10(+0.15/-0.0) DEEP, WITHOUT LOCATING RING
- C Ø27 THRU, (4) HOLES IN MOVING PLATEN, K/O BAR M16 THRU (4) HOLES



¹U 120 / 300 / 450

	UNIT	120			300			450		
	METRIC	A'	A	B	A'	A	B	A'	B	C
INJECTION UNIT SPECIFICATIONS										
INJECTION CAPACITY MAX. (GPPS)	gms	29	56	81	108	146	191	165	215	272
THEORETICAL DISPLACEMENT	cc	31	59	85	113	154	201	173	226	286
INJECTION PRESSURE MAX.	bar	2444	2016	1400	2510	1958	1499	2443	1984	1568
INJECTION RATE (STD) *	cc/sec	52	98	142	141	193	251	168	220	278
INJECTION SPEED (STD)	mm/sec	200	200	200	200	200	200	175	175	175
INJECTION RATE (HIGH) *	cc/sec	90	172	248	247	337	440	336	439	556
INJECTION SPEED (HIGH)	mm/sec	350	350	350	350	350	350	350	350	350
INJECTION SCREW STROKE	mm	120	120	120	160	160	160	180	180	180
SCREW DIAMETER	mm	18	25	30	30	35	40	35	40	45
SCREW L/D RATIO		20	20	20	26.6	22.9	20	25.7	22.2	20
SCREW SPEED	rpm	400	400	400	400	400	400	400	400	400
SCREW TORQUE	NM	175	175	175	350	350	350	550	550	550
PLASTICISING RATE (GP SCREW) *	gm/sec	3	8	12	13	17	24	18	25	34
PLASTICISING RATE (BARRIER SCREW) *	gm/sec	-	-	-	-	24	32	24	33	44
NOZZLE HOLDING FORCE	kN	25			25			25		
NO. OF THERMOCOUPLES (BAR-REL&NOZZLE)		3+1			4+1			4+1		
TOTAL HEAT CAPACITY	KW	4.6	6.7	7.9	9.2			11.3		
CLAMP UNIT SPECIFICATIONS										
CLAMP FORCE	Ton	110			110			110		
CLAMP STROKE	mm	380			380			380		
MAXIMUM DAYLIGHT	mm	900			900			900		
MINIMUM MOULD HEIGHT	mm	150			150			150		
MAXIMUM MOULD HEIGHT	mm	520			520			520		
PLATEN SIZE (H X V)	mm	690 X 645			690 X 645			690 X 645		
TIE BAR SPACING	mm	480 X 435			480 X 435			480 X 435		
TIE BAR DIAMETER	mm	75			75			75		
EJECTOR STROKE	mm	140			140			140		
EJECTOR FORCE	Ton	3.2			3.2			3.2		
MOULD WEIGHT CAPACITY (STAT. / MOVING)	kg	1540 (770 / 770)			1540 (770 / 770)			1540 (770 / 770)		
GENERAL										
TOTAL CONNECTED LOAD	kW	11	12	13	15			18		
WATER REQUIREMENT (INLET TEMP. 29°C)	lpm	30			30			30		
MACHINE DIMENSION (L X W X H)	m	4.9 x 1.6 x 2.3			5.4 x 1.6 x 2.3			5.7 x 1.6 x 2.3		
MACHINE WEIGHT	kg	5500			5700			6200		

* WITH OPEN NOZZLE

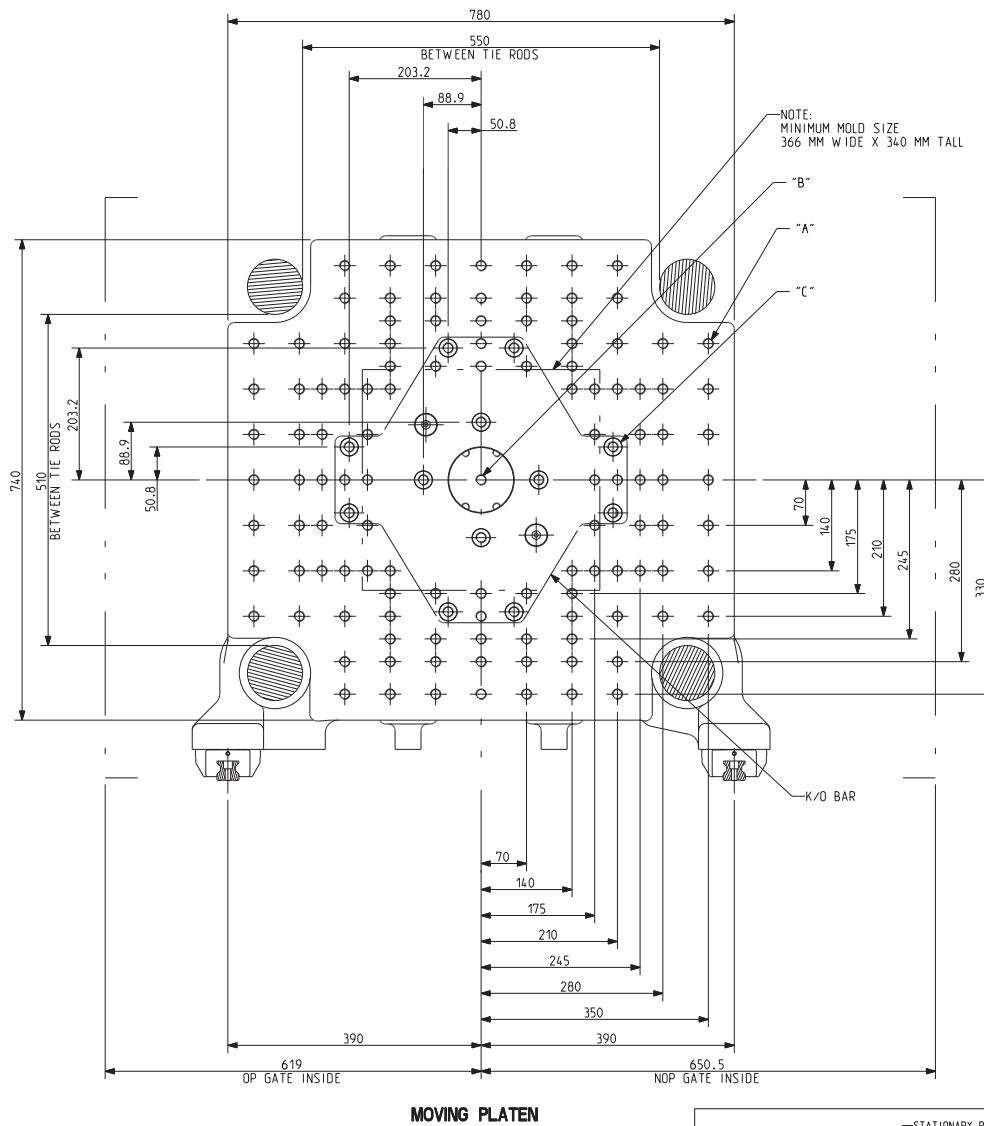
All machine dimensions and specifications are subject to change. Values are for reference only. These values are for standard machine power.

THE eQ-SERIES

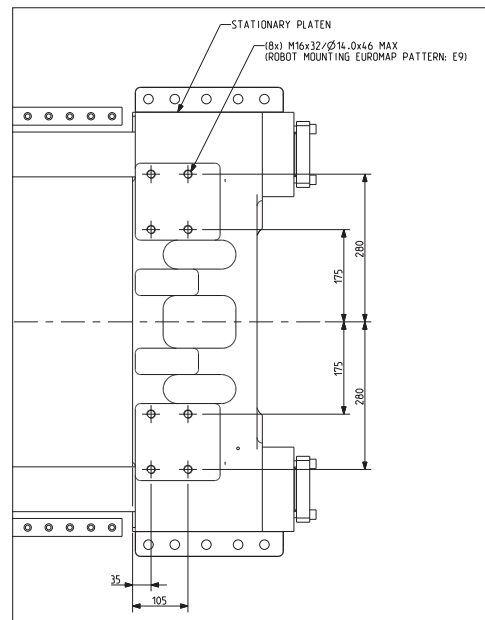
TONNAGE: 150

Injection Unit 300, 450, 630

TECHNICAL SPECIFICATIONS

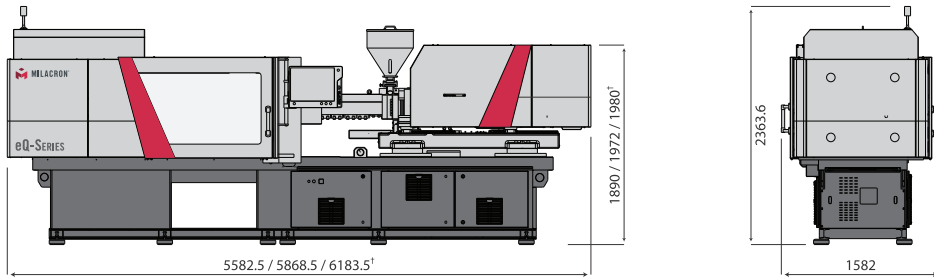


MOVING PLATEN



ALL DIMENSIONS ARE IN MM

- A MOVING PLATEN: M16X32 DEEP (116) PLACES, STATIONARY PLATEN: M16X32 DEEP (116) PLACES.
- B MOVING PLATEN: Ø100(+0.035/-0.0) THRU BORE, K/O BAR CENTRE HOLE M16x40 DEEP. STATIONARY PLATEN: Ø125(+0.04/-0.0) WITH LOCATING RING, Ø160(+0.04/-0.0) x 10(+0.15/-0.0) DEEP, WITHOUT LOCATING RING.
- C Ø27 THRU, (12) HOLES IN MOVING PLATEN, K/O BAR M16x40 DEEP (12) HOLES



¹U 300 / 450 / 630

	UNIT	300			450			630		
	METRIC	A'	A	B	A'	A	B	A'	B	C
INJECTION UNIT SPECIFICATIONS										
INJECTION CAPACITY MAX. (GPPS)	gms	108	146	191	165	215	272	239	303	374
THEORETICAL DISPLACEMENT	cc	113	154	201	173	226	286	251	318	393
INJECTION PRESSURE MAX.	bar	2510	1958	1499	2443	1984	1568	2492	1969	1595
INJECTION RATE (STD) *	cc/sec	141	193	251	168	220	278	220	278	344
INJECTION SPEED (STD)	mm/sec	200	200	200	175	175	175	175	175	175
INJECTION RATE (HIGH) *	cc/sec	247	337	440	336	439	556	415	525	648
INJECTION SPEED (HIGH)	mm/sec	350	350	350	350	350	350	330	330	330
INJECTION SCREW STROKE	mm	160	160	160	180	180	180	200	200	200
SCREW DIAMETER	mm	30	35	40	35	40	45	40	45	50
SCREW L/D RATIO		26.6	22.9	20	25.7	22.2	20	25	22.2	20
SCREW SPEED	rpm	400	400	400	400	400	400	400	400	400
SCREW TORQUE	NM	350	350	350	550	550	550	700	700	700
PLASTICISING RATE (GP SCREW) *	gm/sec	13	17	24	18	25	34	25	34	45
PLASTICISING RATE (BARRIER SCREW) *	gm/sec	-	24	32	24	33	44	32	49	67
NOZZLE HOLDING FORCE	kN	25			25			25		
NO. OF THERMOCOUPLES (BARREL&NOZZLE)		4+1			4+1			4+1		
TOTAL HEAT CAPACITY	KW	9.2			11.3			15.7		
CLAMP UNIT SPECIFICATIONS										
CLAMP FORCE	Ton	150			150			150		
CLAMP STROKE	mm	460			460			460		
MAXIMUM DAYLIGHT	mm	1060			1060			1060		
MINIMUM MOULD HEIGHT	mm	200			200			200		
MAXIMUM MOULD HEIGHT	mm	600			600			600		
PLATEN SIZE (H X V)	mm	780 X 740			780 X 740			780 X 740		
TIE BAR SPACING	mm	550 X 510			550 X 510			550 X 510		
TIE BAR DIAMETER	mm	85			85			85		
EJECTOR STROKE	mm	160			160			160		
EJECTOR FORCE	Ton	4			4			4		
MOULD WEIGHT CAPACITY (STAT. / MOVING)	kg	2300 (1100 / 1200)			2300 (1100 / 1200)			2300 (1100 / 1200)		
GENERAL										
TOTAL CONNECTED LOAD	kW	15			18			25		
WATER REQUIREMENT (INLET TEMP. 29°C)	lpm	30			30			30		
MACHINE DIMENSION (L X W X H)	m	5.6 x 1.6 x 2.4			5.9 x 1.6 x 2.4			6.2 x 1.6 x 2.4		
MACHINE WEIGHT	kg	7000			7500			7800		

* WITH OPEN NOZZLE

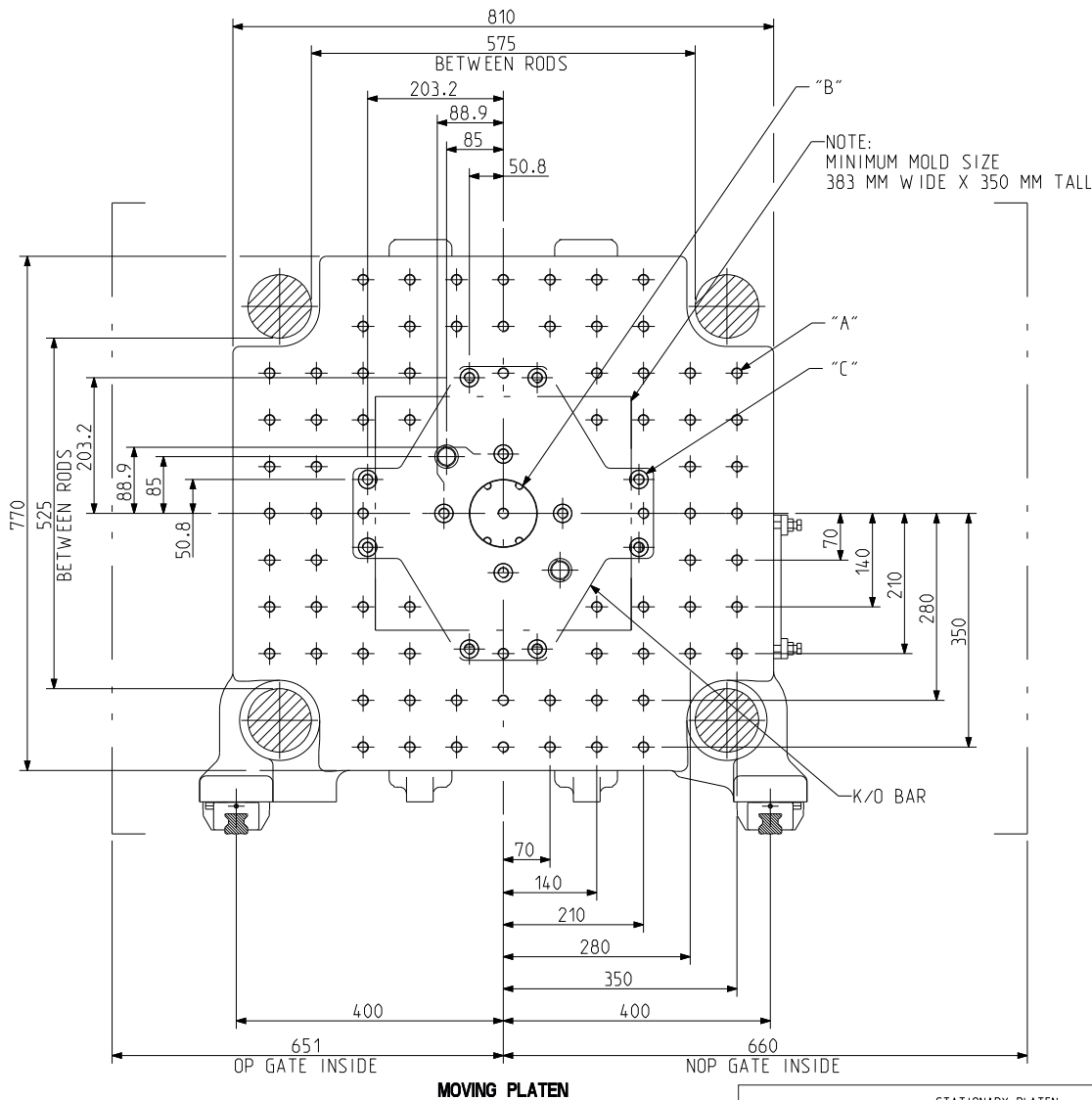
All machine dimensions and specifications are subject to change. Values are for reference only. These values are for standard machine power.

THE eQ-SERIES

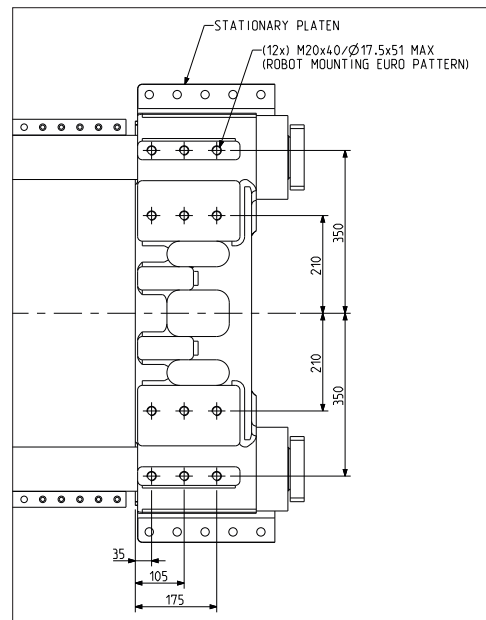
TONNAGE: 180

Injection Unit 450, 630, 970

TECHNICAL SPECIFICATIONS

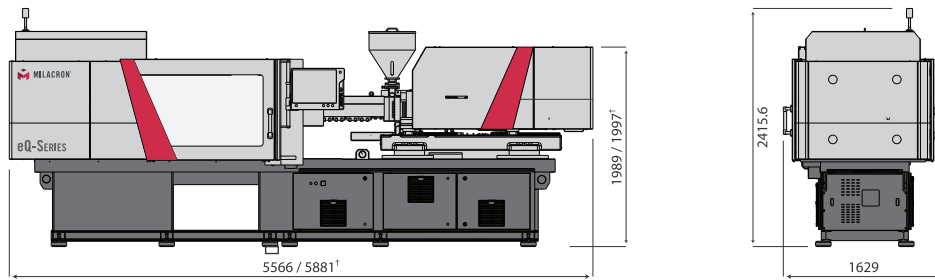


MOVING PLATEN



ALL DIMENSIONS ARE IN MM

- A MOVING PLATEN: M16X32 (76) PLACES,
STATIONARY PLATEN: M16X32 DEEP (84) PLACES
- B MOVING PLATEN: Ø100(+0.035/-0.0) THRU BORE,
K/O BAR CENTRE HOLE M16X40 DEEP
STATIONARY PLATEN:
Ø125(+0.04/-0.0) WITH LOCATING RING,
Ø160(+0.04/-0.0) X 10(+0.15/-0.0) DEEP, WITHOUT LOCATING RING
- C Ø27 THRU, (12) HOLES IN MOVING PLATEN
K/O BAR M16X40 THRU (12) HOLES



*IU 450 / 630

	UNIT	450			630			970		
	METRIC	A'	A	B	A'	A	B	A'	B	C
INJECTION UNIT SPECIFICATIONS										
INJECTION CAPACITY MAX. (GPPS)	gms	165	215	272	239	303	374	363	448	646
THEORETICAL DISPLACEMENT	cc	173	226	286	251	318	393	382	471	679
INJECTION PRESSURE MAX.	bar	2443	1984	1568	2492	1969	1595	2249	2057	1428
INJECTION RATE (STD) *	cc/sec	168	220	278	220	278	344	279	343	495
INJECTION SPEED (STD)	mm/sec	175	175	175	175	175	175	175	175	175
INJECTION RATE (HIGH) *	cc/sec	336	439	556	415	525	648	525	648	934
INJECTION SPEED (HIGH)	mm/sec	350	350	350	330	330	330	330	330	330
INJECTION SCREW STROKE	mm	180	180	180	200	200	200	240	240	240
SCREW DIAMETER	mm	35	40	45	40	45	50	45	50	60
SCREW L/D RATIO		25.7	22.2	20	25	22.2	20	26.7	24	20
SCREW SPEED	rpm	400	400	400	400	400	400	350	350	320
SCREW TORQUE	NM	550	550	550	700	700	700	1100	1100	1100
PLASTICISING RATE (GP SCREW) *	gm/sec	18	25	34	25	34	45	30	39	58
PLASTICISING RATE (BARRIER SCREW) *	gm/sec	24	33	44	32	49	67	39	53	74
NOZZLE HOLDING FORCE	kN	25			25			30		
NO. OF THERMOCOUPLES (BARREL&NOZZLE)		4+1			4+1			4+1		
TOTAL HEAT CAPACITY	KW	11.3			15.7			16.9		
CLAMP UNIT SPECIFICATIONS										
CLAMP FORCE	Ton	180			180			180		
CLAMP STROKE	mm	500			500			500		
MAXIMUM DAYLIGHT	mm	1100			1100			1100		
MINIMUM MOULD HEIGHT	mm	200			200			200		
MAXIMUM MOULD HEIGHT	mm	600			600			600		
PLATEN SIZE (H X V)	mm	810 x 770			810 x 770			810 x 770		
TIE BAR SPACING	mm	575 x 525			575 x 525			575 x 525		
TIE BAR DIAMETER	mm	95			95			95		
EJECTOR STROKE	mm	160			160			160		
EJECTOR FORCE	Ton	4			4			4		
MOULD WEIGHT CAPACITY (STAT. / MOVING)	kg	2500 (1200 / 1300)			2500 (1200 / 1300)			2500 (1200 / 1300)		
GENERAL										
TOTAL CONNECTED LOAD	kW	18			25			31		
WATER REQUIREMENT (INLET TEMP. 29°C)	lpm	30			30			30		
MACHINE DIMENSION (L X W X H)	m	6.0 x 1.7 x 2.5			6.3 x 1.7 x 2.5			6.3 x 1.7 x 2.5		
MACHINE WEIGHT	kg	8200			8500			9700		

* WITH OPEN NOZZLE

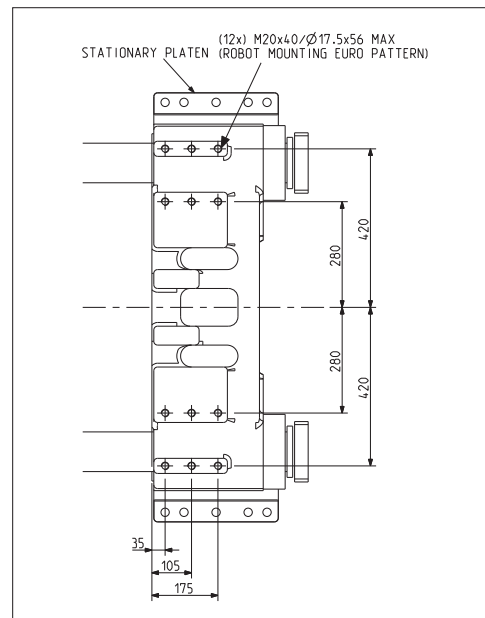
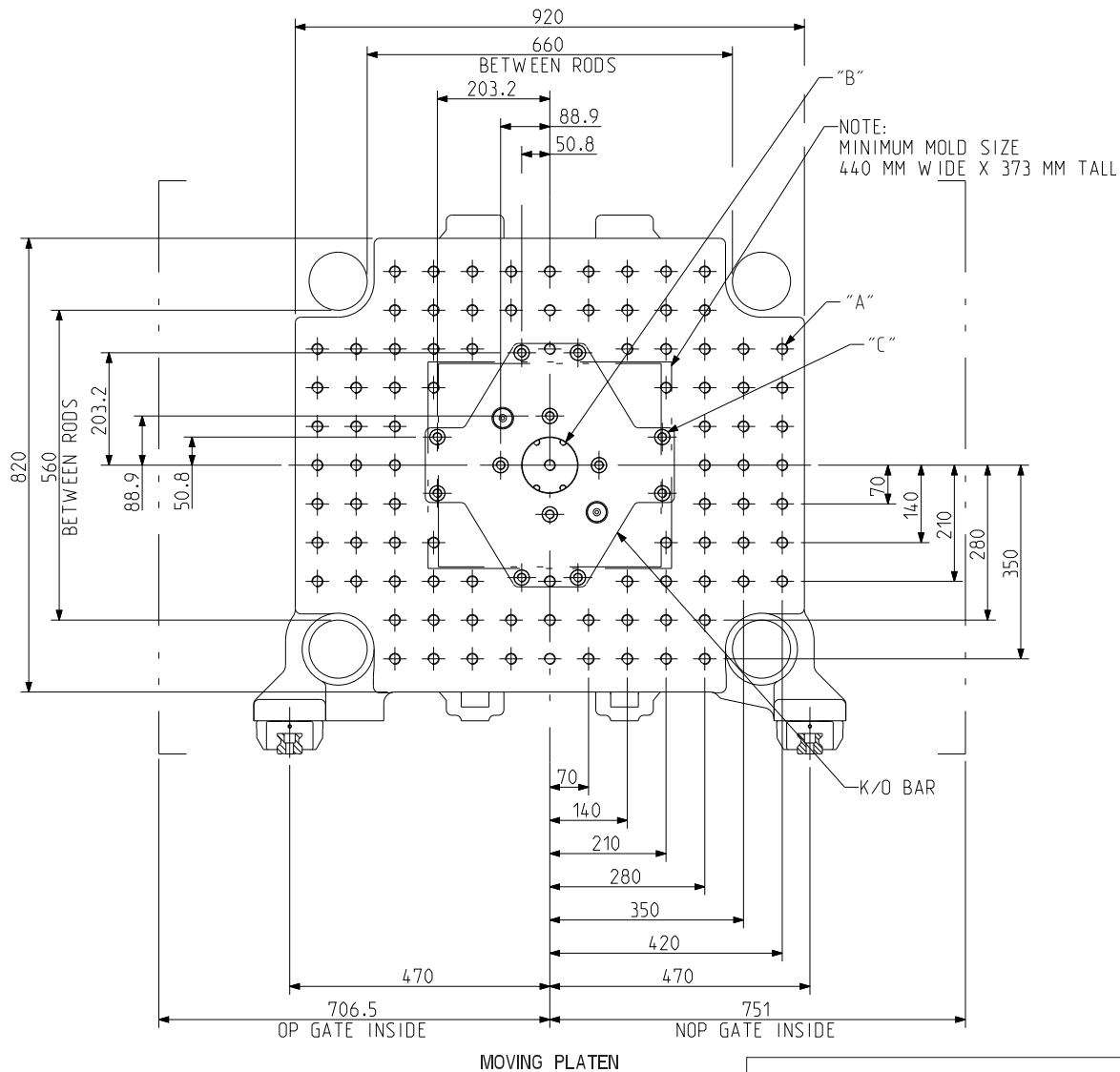
All machine dimensions and specifications are subject to change. Values are for reference only. These values are for standard machine power.

THE eQ-SERIES

TONNAGE: 230

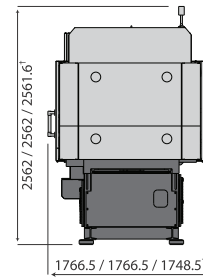
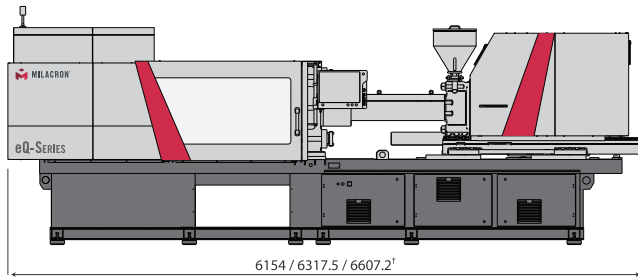
Injection Unit 450, 630, 970

TECHNICAL SPECIFICATIONS



ALL DIMENSIONS ARE IN MM

- A MOVING PLATEN: M20X45 (92) PLACES,
STATIONARY PLATEN: M20X45 DEEP (96) PLACES
- B MOVING PLATEN: Ø100(+0.035/-0.0) THRU BORE,
K/O BAR CENTRE HOLE M16X40 DEEP
STATIONARY PLATEN:
Ø125(+0.04/-0.0) WITH LOCATING RING,
Ø160(+0.04/-0.0) X 10(+0.15/-0.0) DEEP, WITHOUT LOCATING RING
- C Ø27 THRU, (12) HOLES IN MOVING PLATEN
K/O BAR M16X40 THRU (12) HOLES



¹U 450 / 630 / 970

	UNIT	450			630			970		
	METRIC	A'	A	B	A'	A	B	A'	B	C
INJECTION UNIT SPECIFICATIONS										
INJECTION CAPACITY MAX. (GPPS)	gms	165	215	272	239	303	374	363	448	646
THEORETICAL DISPLACEMENT	cc	173	226	286	251	318	393	382	471	679
INJECTION PRESSURE MAX.	bar	2443	1984	1568	2492	1969	1595	2249	2057	1428
INJECTION RATE (STD) *	cc/sec	168	220	278	220	278	344	279	343	495
INJECTION SPEED (STD)	mm/sec	175	175	175	175	175	175	175	175	175
INJECTION RATE (HIGH) *	cc/sec	336	439	556	415	525	648	525	648	934
INJECTION SPEED (HIGH)	mm/sec	350	350	350	330	330	330	330	330	330
INJECTION SCREW STROKE	mm	180	180	180	200	200	200	240	240	240
SCREW DIAMETER	mm	35	40	45	40	45	50	45	50	60
SCREW L/D RATIO		25.7	22.2	20	25	22.2	20	26.7	24	20
SCREW SPEED	rpm	400	400	400	400	400	400	350	350	320
SCREW TORQUE	NM	550	550	550	700	700	700	1100	1100	1100
PLASTICISING RATE (GP SCREW) *	gm/sec	18	25	34	25	34	45	30	39	58
PLASTICISING RATE (BARRIER SCREW) *	gm/sec	24	33	44	32	49	67	39	53	74
NOZZLE HOLDING FORCE	kN	25			25			30		
NO. OF THERMOCOUPLES (BARREL&NOZZLE)		4+1			4+1			4+1		
TOTAL HEAT CAPACITY	KW	11.3			15.7			16.9		
CLAMP UNIT SPECIFICATIONS										
CLAMP FORCE	Ton	230			230			230		
CLAMP STROKE	mm	550			550			550		
MAXIMUM DAYLIGHT	mm	1260			1260			1260		
MINIMUM MOULD HEIGHT	mm	200			200			200		
MAXIMUM MOULD HEIGHT	mm	710			710			710		
PLATEN SIZE (H X V)	mm	920 x 820			920 x 820			920 x 820		
TIE BAR SPACING	mm	660 x 560			660 x 560			660 x 560		
TIE BAR DIAMETER	mm	105			105			105		
EJECTOR STROKE	mm	180			180			180		
EJECTOR FORCE	Ton	6.0			6.0			6.0		
MOULD WEIGHT CAPACITY (STAT. / MOVING)	kg	3200 (1500 / 1700)			3200 (1500 / 1700)			3200 (1500 / 1700)		
GENERAL										
TOTAL CONNECTED LOAD	kW	18			25			32		
WATER REQUIREMENT (INLET TEMP. 29°C)	lpm	30			30			30		
MACHINE DIMENSION (L X W X H)	m	6.6 x 1.8 x 2.6			6.5 x 1.8 x 2.6			6.8 x 1.8 x 2.6		
MACHINE WEIGHT	kg	10500			10800			12000		

* WITH OPEN NOZZLE

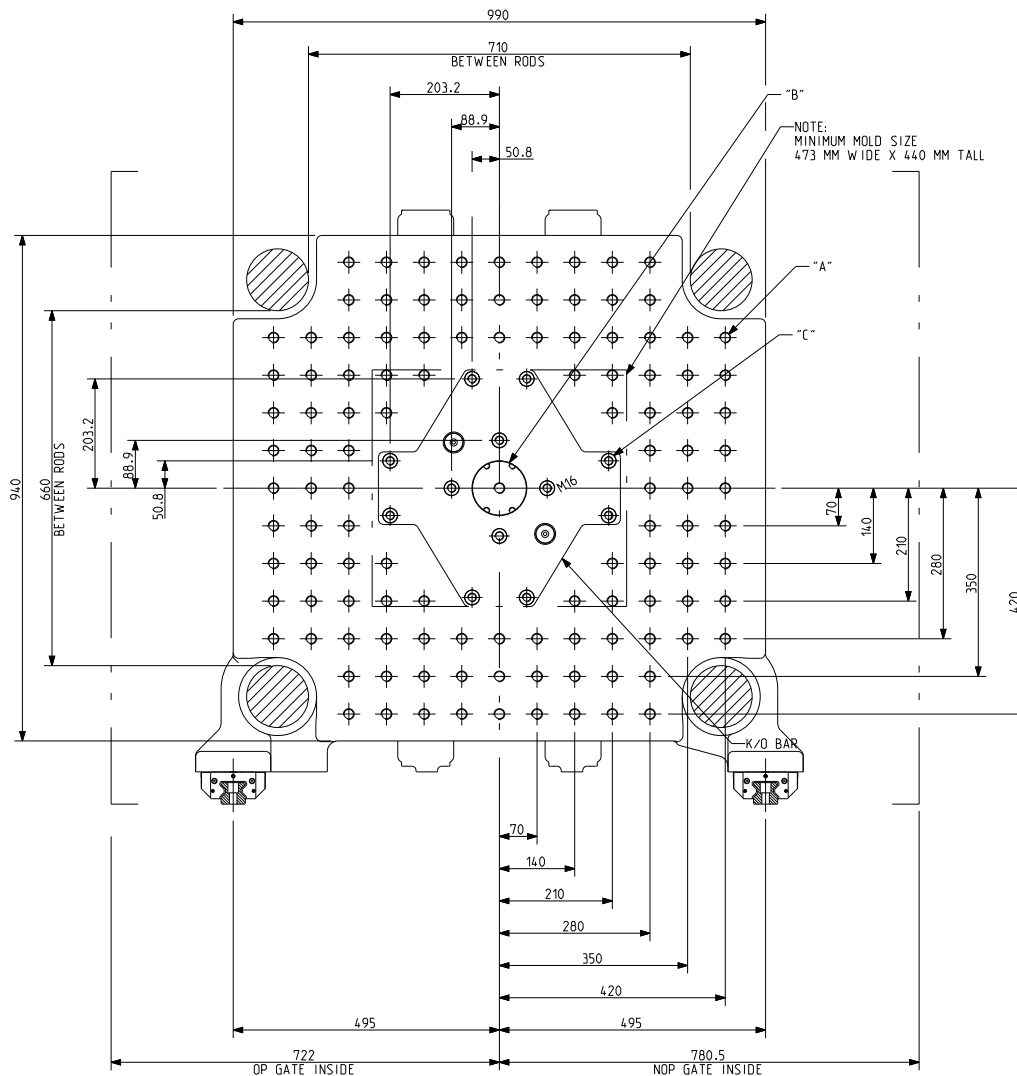
All machine dimensions and specifications are subject to change. Values are for reference only. These values are for standard machine power.

THE eQ-SERIES

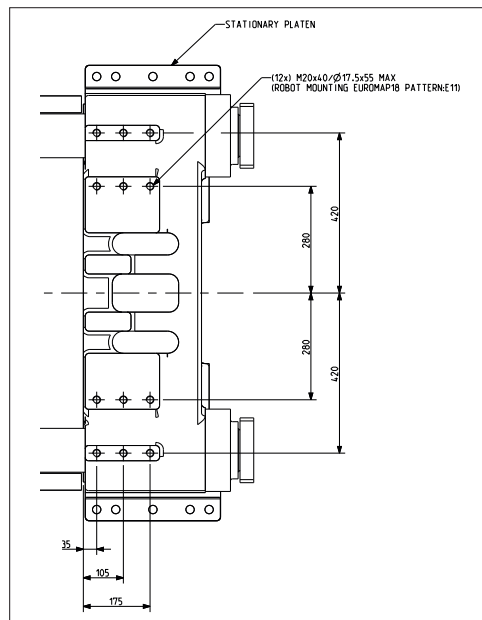
TONNAGE: 280

Injection Unit 630, 970, 1540

TECHNICAL SPECIFICATIONS

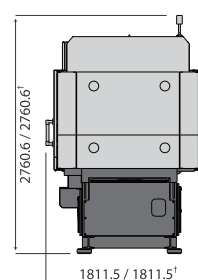
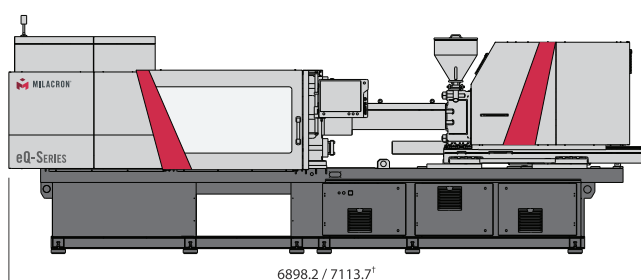


MOVING PLATEN



ALL DIMENSIONS ARE IN MM

- A M20X45 (108) PLACES ON BOTH PLATEN
- B MOVING PLATEN: Ø100(+0.035/-0.0) THRU BORE, K/O BAR CENTRE HOLE M16X40 THRU STATIONARY PLATEN: Ø125(+0.04/-0.0) WITH LOCATING RING, Ø160(+0.04/-0.0) x 10(+0.15/-0.0) DEEP, WITHOUT LOCATING RING
- C Ø27 THRU, (12) HOLES IN MOVING PLATEN K/O BAR M16X40 THRU (12) HOLES



11U 970 / 1540

	UNIT	630			970			1540		
	METRIC	A'	A	B	A'	A	B	A'	A	B
INJECTION UNIT SPECIFICATIONS										
INJECTION CAPACITY MAX. (GPPS)	gms	239	303	374	363	448	646	523	753	1025
THEORETICAL DISPLACEMENT	cc	251	318	393	382	471	679	550	792	1078
INJECTION PRESSURE MAX.	bar	2492	1969	1595	2249	2057	1428	2236	1941	1426
INJECTION RATE (STD) *	cc/sec	220	278	344	279	343	495	314	453	616
INJECTION SPEED (STD)	mm/sec	175	175	175	175	175	175	160	160	160
INJECTION RATE (HIGH) *	cc/sec	415	525	648	525	648	934	589	849	1155
INJECTION SPEED (HIGH)	mm/sec	330	330	330	330	330	330	300	300	300
INJECTION SCREW STROKE	mm	200	200	200	240	240	240	280	280	280
SCREW DIAMETER	mm	40	45	50	45	50	60	50	60	70
SCREW L/D RATIO		25	22.2	20	26.7	24	20	28	23.3	20
SCREW SPEED	rpm	400	400	400	350	350	320	350	320	275
SCREW TORQUE	NM	700	700	700	1100	1100	1100	1600	1600	1600
PLASTICISING RATE (GP SCREW) *	gm/sec	25	34	45	30	39	58	40	58	77
PLASTICISING RATE (BARRIER SCREW) *	gm/sec	32	49	67	39	53	74	52	74	101
NOZZLE HOLDING FORCE	kN	25			30			30		
NO. OF THERMOCOUPLES (BAR-REL&NOZZLE)		4+1			4+1			5+1		
TOTAL HEAT CAPACITY	KW	15.7			16.9			24.9		
CLAMP UNIT SPECIFICATIONS										
CLAMP FORCE	Ton	280			280			280		
CLAMP STROKE	mm	650			650			650		
MAXIMUM DAYIGHT	mm	1400			1400			1400		
MINIMUM MOULD HEIGHT	mm	250			250			250		
MAXIMUM MOULD HEIGHT	mm	750			750			750		
PLATEN SIZE (H X V)	mm	990 x 940			990 x 940			990 x 940		
TIE BAR SPACING	mm	710 x 660			710 x 660			710 x 660		
TIE BAR DIAMETER	mm	115			115			115		
EJECTOR STROKE	mm	180			180			180		
EJECTOR FORCE	Ton	6.0			6.0			6.0		
MOULD WEIGHT CAPACITY (STAT. / MOVING)	kg	4400 (1900 / 2500)			4400 (1900 / 2500)			4400 (1900 / 2500)		
GENERAL										
TOTAL CONNECTED LOAD	kW	25			33			43		
WATER REQUIREMENT (INLET TEMP. 29°C)	lpm	30			30			30		
MACHINE DIMENSION (L X W X H)	m	7.0 x 1.9 x 2.8			7.1 x 1.9 x 2.8			7.5 x 1.9 x 2.8		
MACHINE WEIGHT	kg	12300			14200			14700		

* WITH OPEN NOZZLE

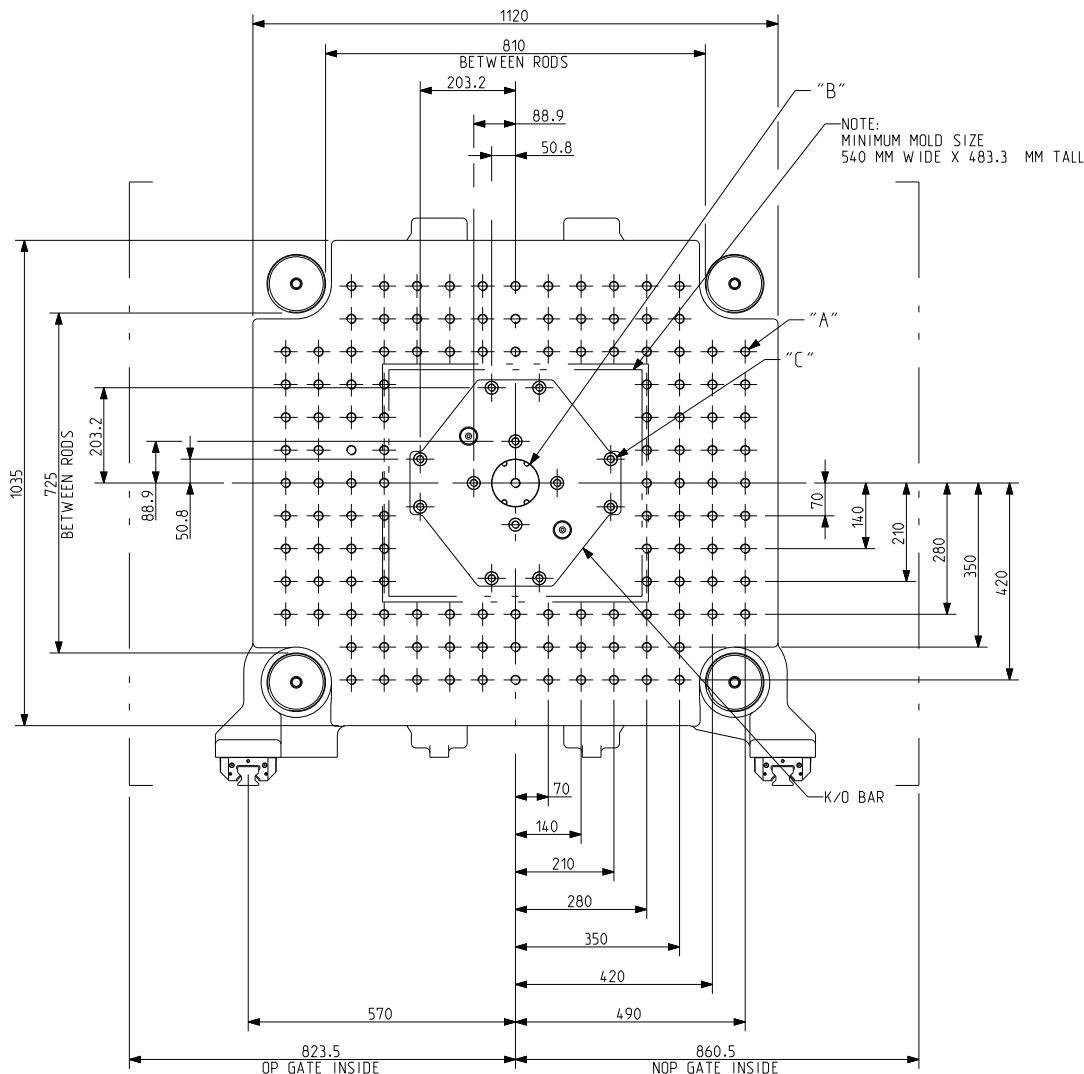
All machine dimensions and specifications are subject to change. Values are for reference only. These values are for standard machine power.

THE eQ-SERIES

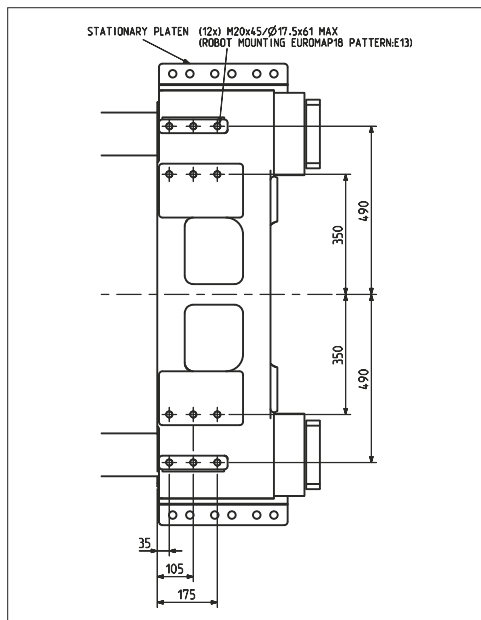
TONNAGE: 350

Injection Unit 970, 1540, 2290

TECHNICAL SPECIFICATIONS

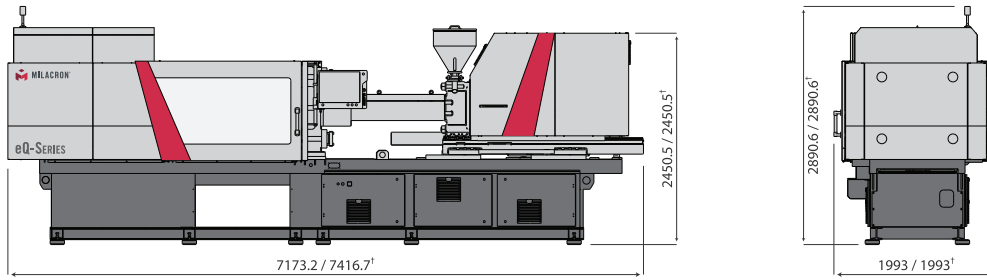


MOVING PLATEN



ALL DIMENSIONS ARE IN MM

- A M20X45 (130) PLACES ON BOTH PLATEN
- B MOVING PLATEN: $\text{Ø}100(+0.035/-0.0)$ THRU BORE, K/O BAR CENTRE HOLE M16X40 THRU
 STATIONARY PLATEN:
 $\text{Ø}160(+0.040/-0.0)$ WITH LOCATING RING,
 $\text{Ø}200(+0.046/-0.0) \times 10(+0.15/-0.0)$ DEEP, WITHOUT LOCATING RING
- C $\text{Ø}27$ THRU, (12) HOLES IN MOVING PLATEN
 K/O BAR M16X40 THRU (12) HOLES



1IU 970 / 1540

	UNIT	970			1540			2290		
	METRIC	A'	A	B	A'	A	B	A'	A	B
INJECTION UNIT SPECIFICATIONS										
INJECTION CAPACITY MAX. (GPPS)	gms	363	448	646	523	753	1025	861	1172	1530
THEORETICAL DISPLACEMENT	cc	382	471	679	550	792	1078	905	1232	1608
INJECTION PRESSURE MAX.	bar	2249	2057	1428	2236	1941	1426	2238	1856	1421
INJECTION RATE (STD) *	cc/sec	279	343	495	314	453	616	424	578	754
INJECTION SPEED (STD)	mm/sec	175	175	175	160	160	160	150	150	150
INJECTION RATE (HIGH) *	cc/sec	525	648	934	589	849	1155	792	1078	1407
INJECTION SPEED (HIGH)	mm/sec	330	330	330	300	300	300	280	280	280
INJECTION SCREW STROKE	mm	240	240	240	280	280	280	320	320	320
SCREW DIAMETER	mm	45	50	60	50	60	70	60	70	80
SCREW L/D RATIO		26.7	24	20	28	23.3	20	26.7	22.9	20
SCREW SPEED	rpm	350	350	320	350	320	275	300	275	240
SCREW TORQUE	NM	1100	1100	1100	1600	1600	1600	2600	2600	2600
PLASTICISING RATE (GP SCREW) *	gm/sec	30	39	58	40	58	77	54	77	93
PLASTICISING RATE (BARRIER SCREW) *	gm/sec	39	53	74	52	74	101	69	101	118
NOZZLE HOLDING FORCE	kN	30			30			40		
NO. OF THERMOCOUPLES (BAR-REL&NOZZLE)		4+1			5+1			5+1		
TOTAL HEAT CAPACITY	KW	16.9			24.9			39.6		
CLAMP UNIT SPECIFICATIONS										
CLAMP FORCE	Ton	350			350			350		
CLAMP STROKE	mm	720			720			720		
MAXIMUM DAYIGHT	mm	1520			1520			1520		
MINIMUM MOULD HEIGHT	mm	300			300			300		
MAXIMUM MOULD HEIGHT	mm	800			800			800		
PLATEN SIZE (H X V)	mm	1120 x 1035			1120 x 1035			1120 x 1035		
TIE BAR SPACING	mm	810 x 725			810 x 725			810 x 725		
TIE BAR DIAMETER	mm	125			125			125		
EJECTOR STROKE	mm	200			200			200		
EJECTOR FORCE	Ton	7.5			7.5			7.5		
MOULD WEIGHT CAPACITY (STAT. / MOVING)	kg	6000 (2700 / 3300)			6000 (2700 / 3300)			6000 (2700 / 3300)		
GENERAL										
TOTAL CONNECTED LOAD	kW	35			45			58		
WATER REQUIREMENT (INLET TEMP. 29°C)	lpm	30			30			30		
MACHINE DIMENSION (L X W X H)	m	7.3 x 2.0 x 2.9			7.8 x 2.0 x 2.9			8.6 x 2.0 x 2.9		
MACHINE WEIGHT	kg	17500			18000			18250		

* WITH OPEN NOZZLE

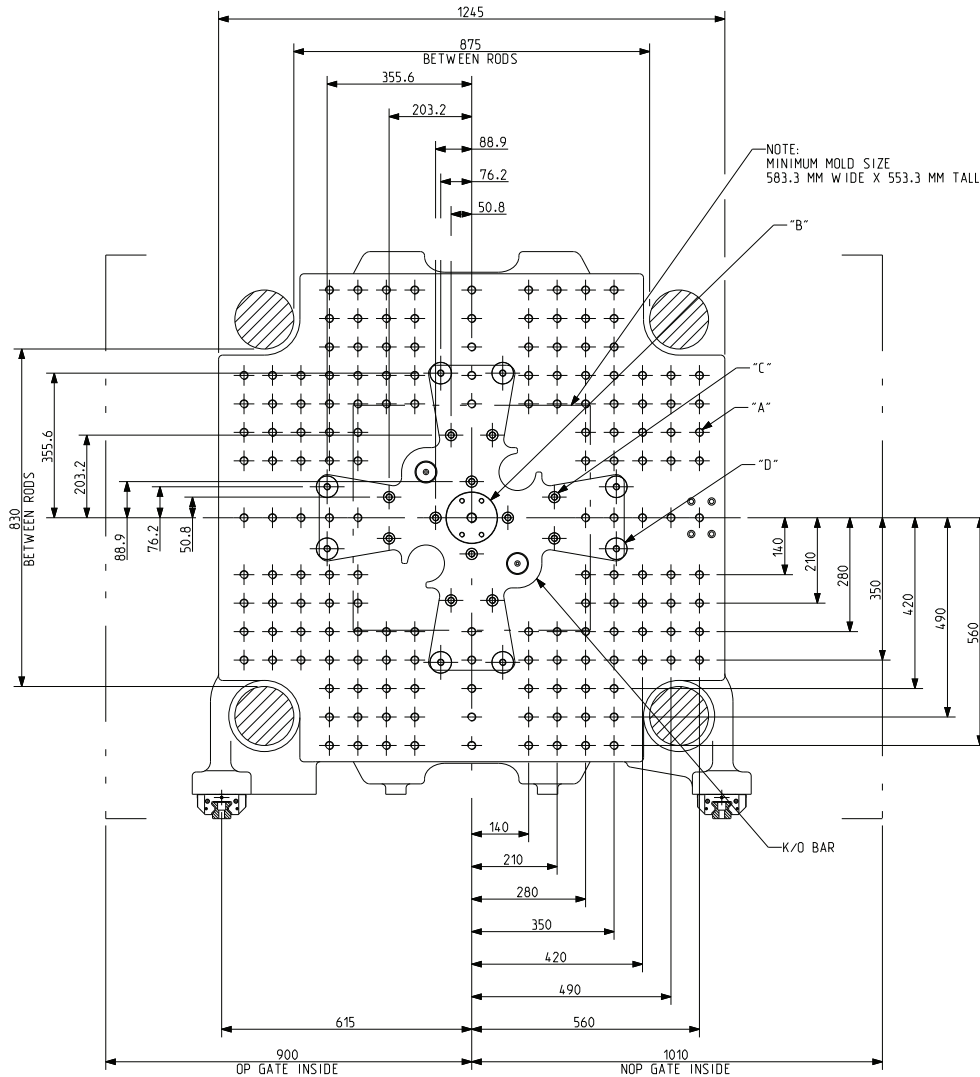
All machine dimensions and specifications are subject to change. Values are for reference only. These values are for standard machine power.

THE eQ-SERIES

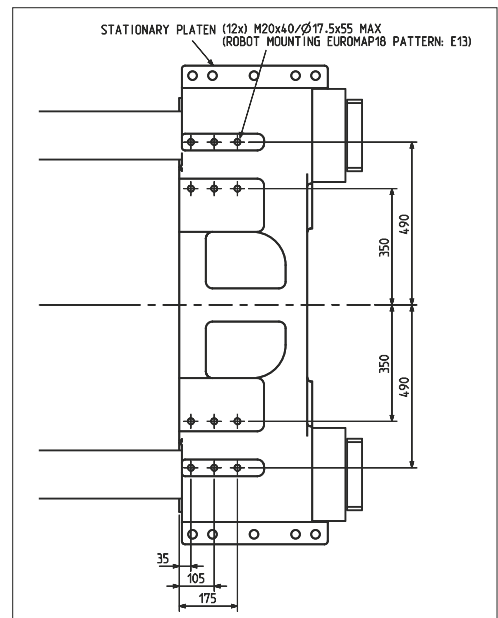
TONNAGE: 450

Injection Unit 1540, 2290, 3470

TECHNICAL SPECIFICATIONS

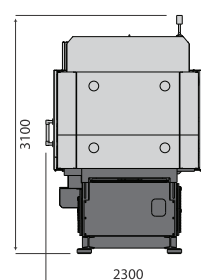
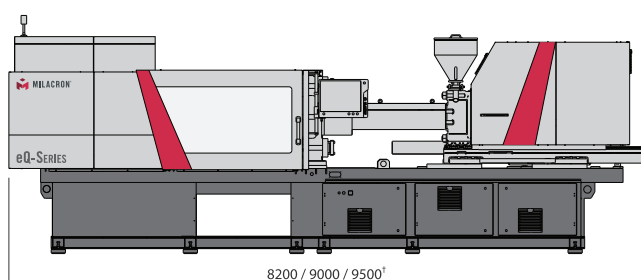


MOVING PLATEN



ALL DIMENSIONS ARE IN MM

- A M20X45 (164) PLACES ON BOTH PLATEN
- B MOVING PLATEN: $\text{Ø}125(+0.04/-0.0)$ THRU BORE, K/O BAR CENTRE HOLE M24X43 THRU
STATIONARY PLATEN: $\text{Ø}160(+0.04/-0.0)$ WITH LOCATING RING, $\text{Ø}200(+0.046/-0.0) \times 10(+0.15/-0.0)$ DEEP, WITHOUT LOCATING RING
- C $\text{Ø}27$ THRU, (12) HOLES IN MOVING PLATEN
K/O BAR M16X40 THRU (20) HOLES
- D $\text{Ø}52.4$ THRU (8) HOLES



¹U 1540 / 2290 / 3470

	UNIT	1540			2290			3470		
	METRIC	A'	A	B	A'	A	B	A'	A	B
INJECTION UNIT SPECIFICATIONS										
INJECTION CAPACITY MAX. (GPPS)	gms	523	753	1025	861	1172	1530	1318	1722	2179
THEORETICAL DISPLACEMENT	cc	550	792	1078	905	1232	1608	1385	1810	2290
INJECTION PRESSURE MAX.	bar	2236	1941	1426	2238	1856	1421	2289	1917	1515
INJECTION RATE (STD) *	cc/sec	314	453	616	424	578	754	577	754	954
INJECTION SPEED (STD)	mm/sec	160	160	160	150	150	150	150	150	150
INJECTION RATE (HIGH) *	cc/sec	589	849	1155	792	1078	1407	962	1257	1590
INJECTION SPEED (HIGH)	mm/sec	300	300	300	280	280	280	250	250	250
INJECTION SCREW STROKE	mm	280	280	280	320	320	320	360	360	360
SCREW DIAMETER	mm	50	60	70	60	70	80	70	80	90
SCREW L/D RATIO		28	23.3	20	26.7	22.9	20	25.7	22.5	20
SCREW SPEED	rpm	350	320	275	300	275	240	215	215	215
SCREW TORQUE	NM	1600	1600	1600	2600	2600	2600	3000	3000	3000
PLASTICISING RATE (GP SCREW) *	gm/sec	40	58	77	54	77	93	60	83	111
PLASTICISING RATE (BARRIER SCREW) *	gm/sec	52	74	101	69	101	118	78	107	142
NOZZLE HOLDING FORCE	kN	30			40			40		
NO. OF THERMOCOUPLES (BAR-REL&NOZZLE)		5+1			5+1			5+1		
TOTAL HEAT CAPACITY	KW	24.9			39.6			39.6		
CLAMP UNIT SPECIFICATIONS										
CLAMP FORCE	Ton	450			450			450		
CLAMP STROKE	mm	850			850			850		
MAXIMUM DAYIGHT	mm	1670			1670			1670		
MINIMUM MOULD HEIGHT	mm	350			350			350		
MAXIMUM MOULD HEIGHT	mm	820			820			820		
PLATEN SIZE (H X V)	mm	1245 x 1200			1245 x 1200			1245 x 1200		
TIE BAR SPACING	mm	875 x 830			875 x 830			875 x 830		
TIE BAR DIAMETER	mm	145			145			145		
EJECTOR STROKE	mm	230			230			230		
EJECTOR FORCE	Ton	10			10			10		
MOULD WEIGHT CAPACITY (STAT. / MOVING)	kg	8000 (4000 / 4000)			8000 (4000 / 4000)			8000 (4000 / 4000)		
GENERAL										
TOTAL CONNECTED LOAD	kW	52			63			91		
WATER REQUIREMENT (INLET TEMP. 29°C)	lpm	30			30			30		
MACHINE DIMENSION (L X W X H)	m	8.2 x 2.3 x 3.1			9.0 x 2.3 x 3.1			9.5 x 2.3 x 3.1		
MACHINE WEIGHT	kg	24500			26000			27600		

* WITH OPEN NOZZLE

All machine dimensions and specifications are subject to change. Values are for reference only. These values are for standard machine power.



Ferromatik Milacron GmbH
Brühlstrasse 10
D-79331 Teningen

+49 7641 95 45 88 -710
fm-sales-eu@milacron.com
www.milacron.com